

Temporary RocketLinx and Java Compatibility Issue

There is a known condition in which a user will be unable to open the web server interface of RocketLinx managed switches. This condition occurs after Java Version 7 Update 51 is installed in the PC and using Java with the default browser security settings. Previous versions of Java will not exhibit this behavior.

Control is aware of and actively working to correct this situation, which will be resolved shortly.

These products **are** currently compatible with Java Runtime Environment (Version 7 Update 51) if the latest firmware version is uploaded.

- ES8508 [v1.3c](#)
- ES8508F [v1.3c](#)
- ES8509XT [v1.4](#)

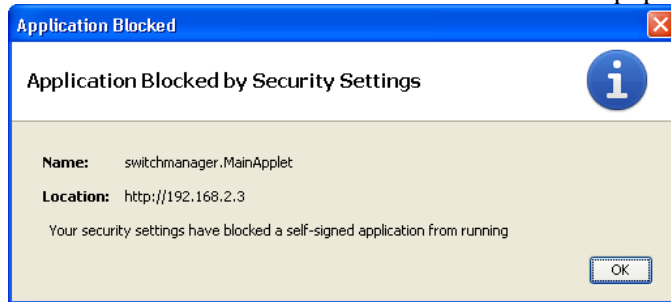
The following products **are temporarily not** compatible with Java Runtime Environment (Version 7 Update 51): ES7506, ES7510, ES7510-XT, ES7528, ES8510, ES8510-XT, E8510-XTE, and ES9528.

Please note the following list specifies the firmware version in which this issue will be resolved and provides a link to the file download location:

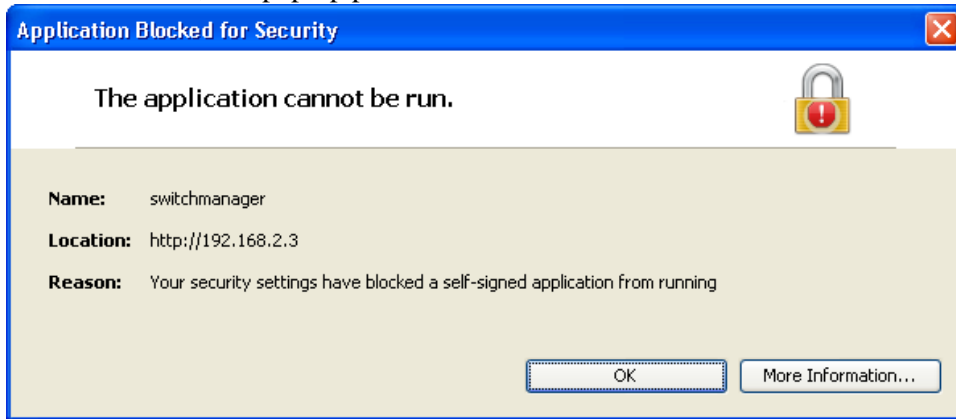
- ES7506 [v2.3](#)
- ES7510 [v1.3b](#)
- ES7510-XT [v1.3b](#)
- ES7528 [v1.4a](#)
- ES8510/ES8510-XT [v2.7b](#)
- E8510-XTE [v2.7a](#)
- ES9528/ES9528-XT [v1.4a](#)

Demonstration of the Issue

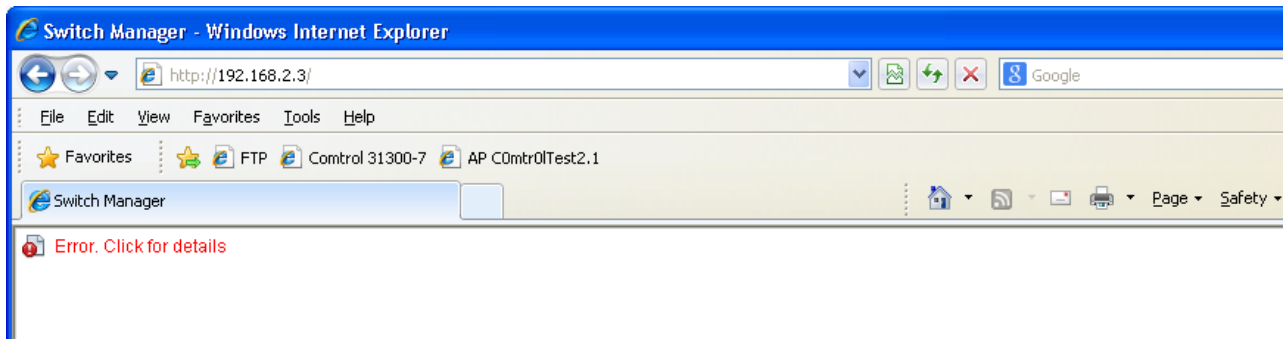
1. Open web browser and enter IP address of the RocketLinx. A Java pop-up message showing:



2. When OK is clicked, this pop-up presents itself.

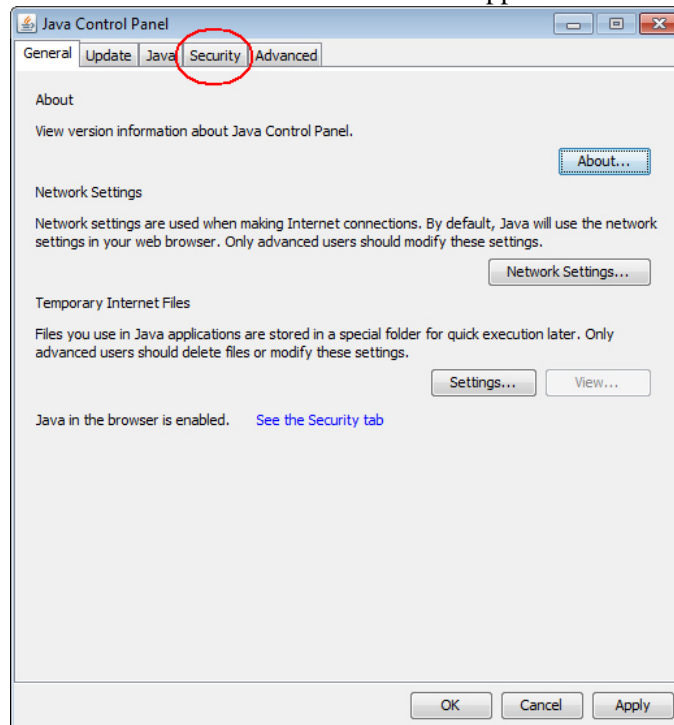


3. When OK is selected, the browser displays the following

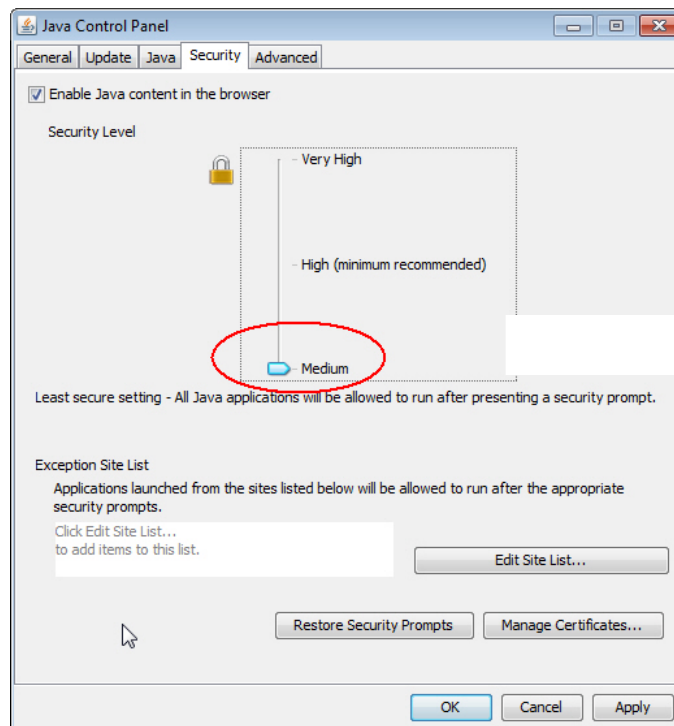


Workaround (Implement as a Temporary Solution)

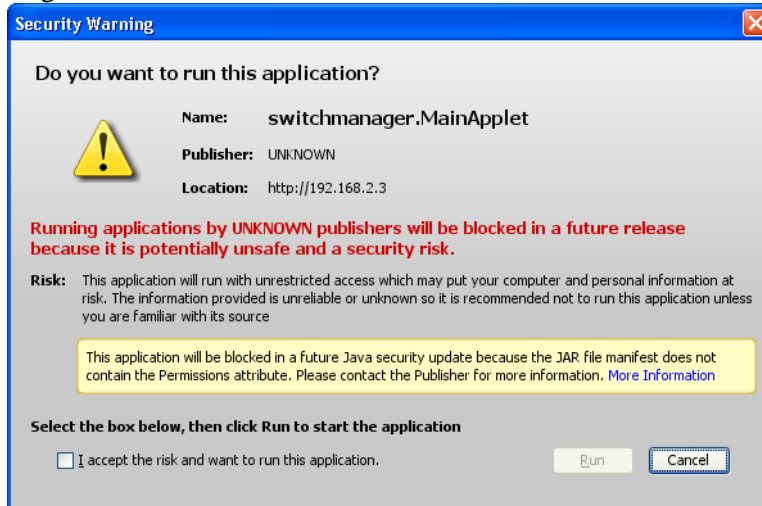
1. Open the Windows Control Panel and select the JAVA applet.



2. Click the **Security** tab.
3. Slide the Security Level indicator from High to **Medium**, click **Apply** and **OK**.



- Now when you close and re-open the browser and open the page to your RocketLinx you should show something like this:



- Click **I Accept the risk and want to run this application** and then click **Run** to continue.