

# POE Basic Setup

Attach ethernet cable from PC to RocketLinx

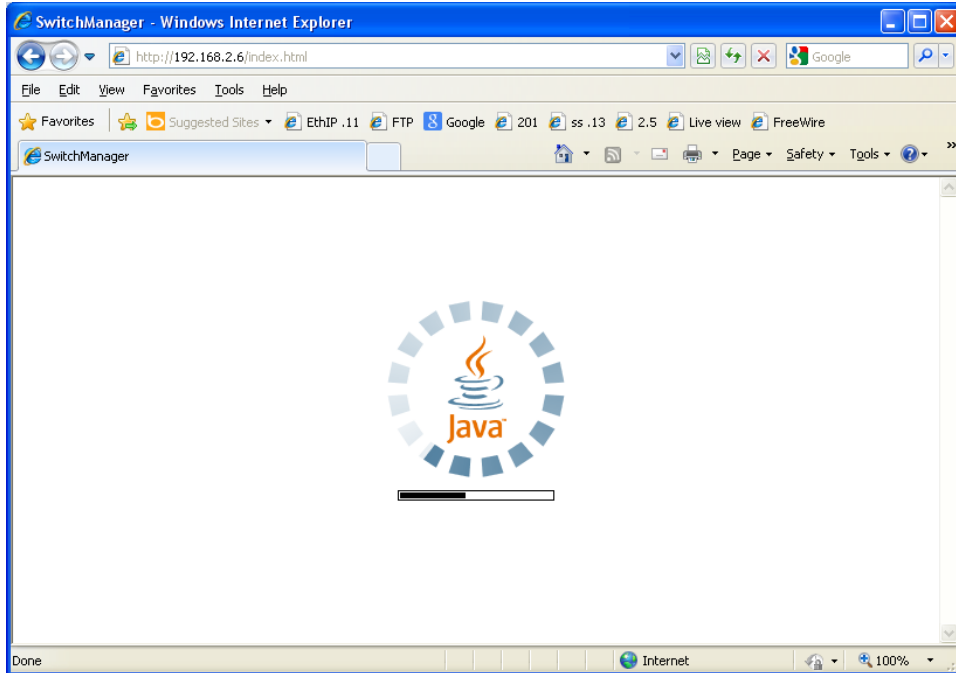
Attach power to RocketLinx

Internet Explorer will require JAVA to be installed. If necessary download and install JAVA

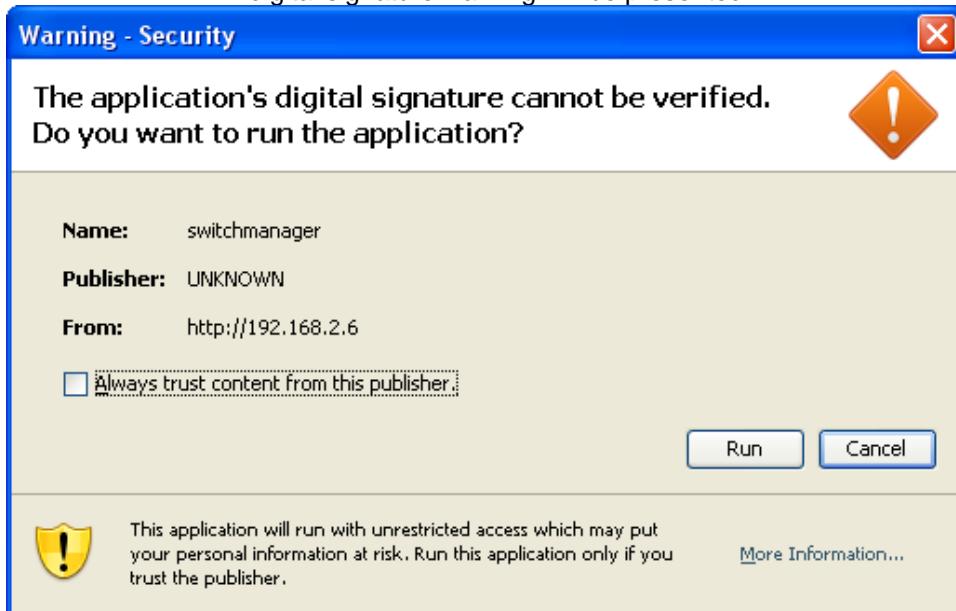
An IP Address needs to be assigned to the RocketLinx.

This document will assume that this has already been accomplished and an IP Address compatible with the network has been implemented.

Open Internet Explorer and input the IP address of the RocketLinx in the address field  
Java will start



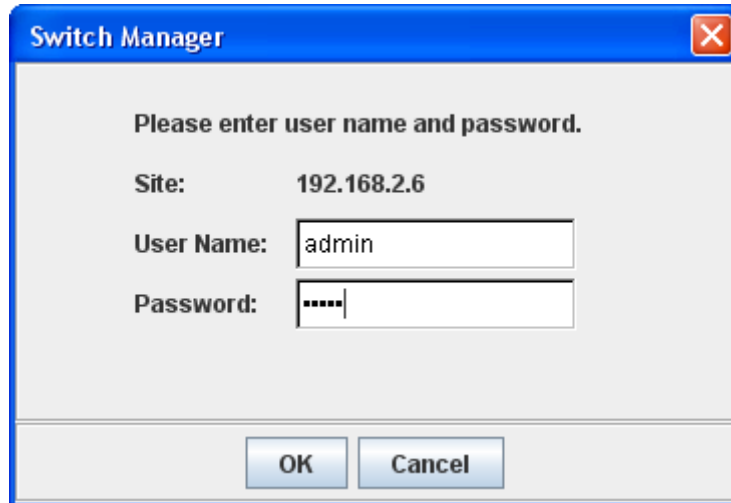
A digital signature warning will be presented



Optionally checkmark the option to "Always trust content from this publisher" so this message is not again presented.

Click **Run**

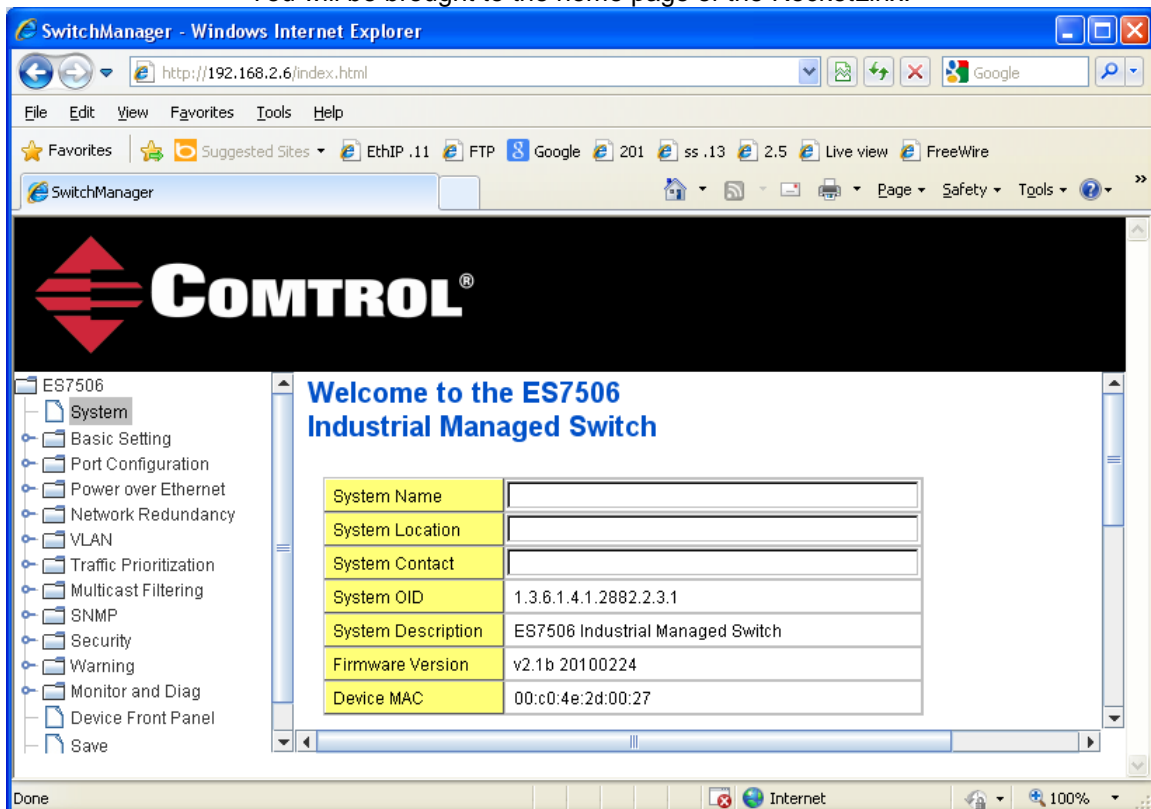
The Switch Manager Username and password dialog will be presented.  
Enter 'admin' for both the User Name: and Password:



A dialog box titled "Switch Manager" with a close button in the top right corner. The text inside reads "Please enter user name and password." Below this, the "Site:" field is set to "192.168.2.6". The "User Name:" field contains the text "admin". The "Password:" field contains six dots. At the bottom of the dialog are two buttons: "OK" and "Cancel".

Click OK

You will be brought to the home page of the RocketLinX.

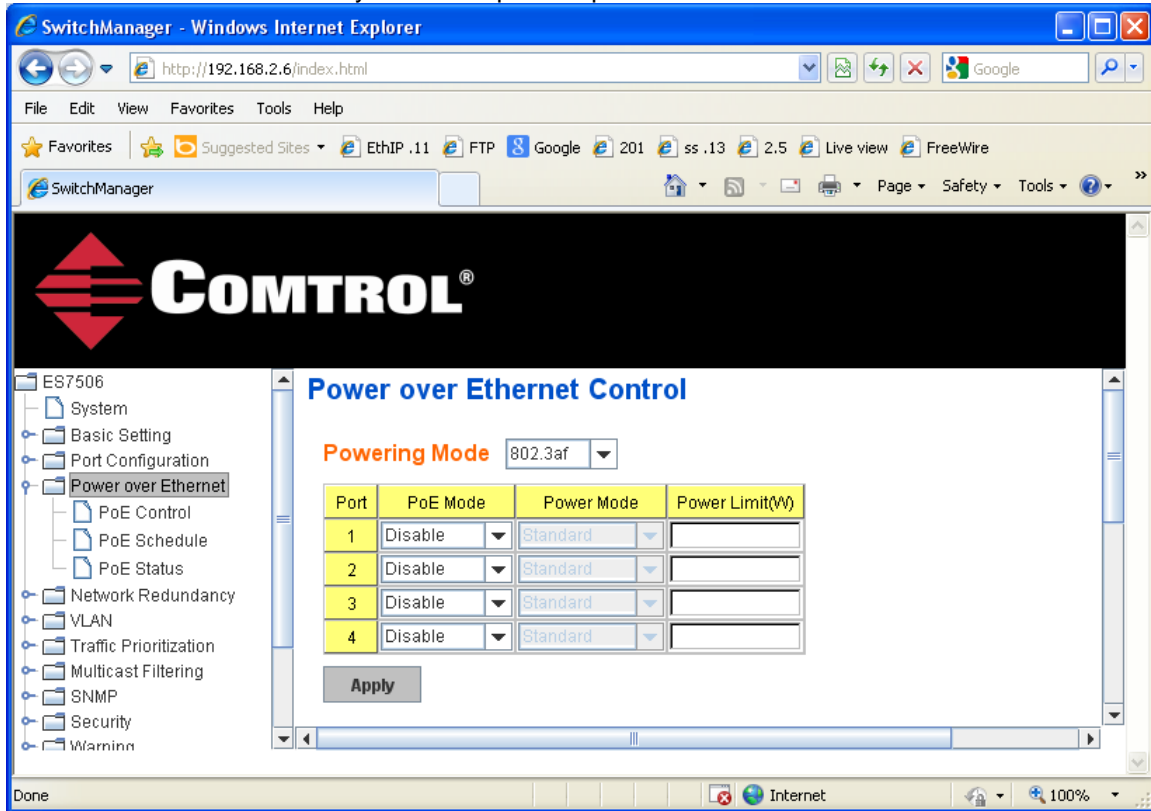


A screenshot of a Windows Internet Explorer browser window displaying the Switch Manager web interface. The address bar shows "http://192.168.2.6/index.html". The page features the "CONTROL" logo at the top left. A navigation tree on the left lists various configuration categories under "ES7506", including System, Basic Setting, Port Configuration, Power over Ethernet, Network Redundancy, VLAN, Traffic Prioritization, Multicast Filtering, SNMP, Security, Warning, Monitor and Diag, Device Front Panel, and Save. The main content area displays a "Welcome to the ES7506 Industrial Managed Switch" message and a table of system information.

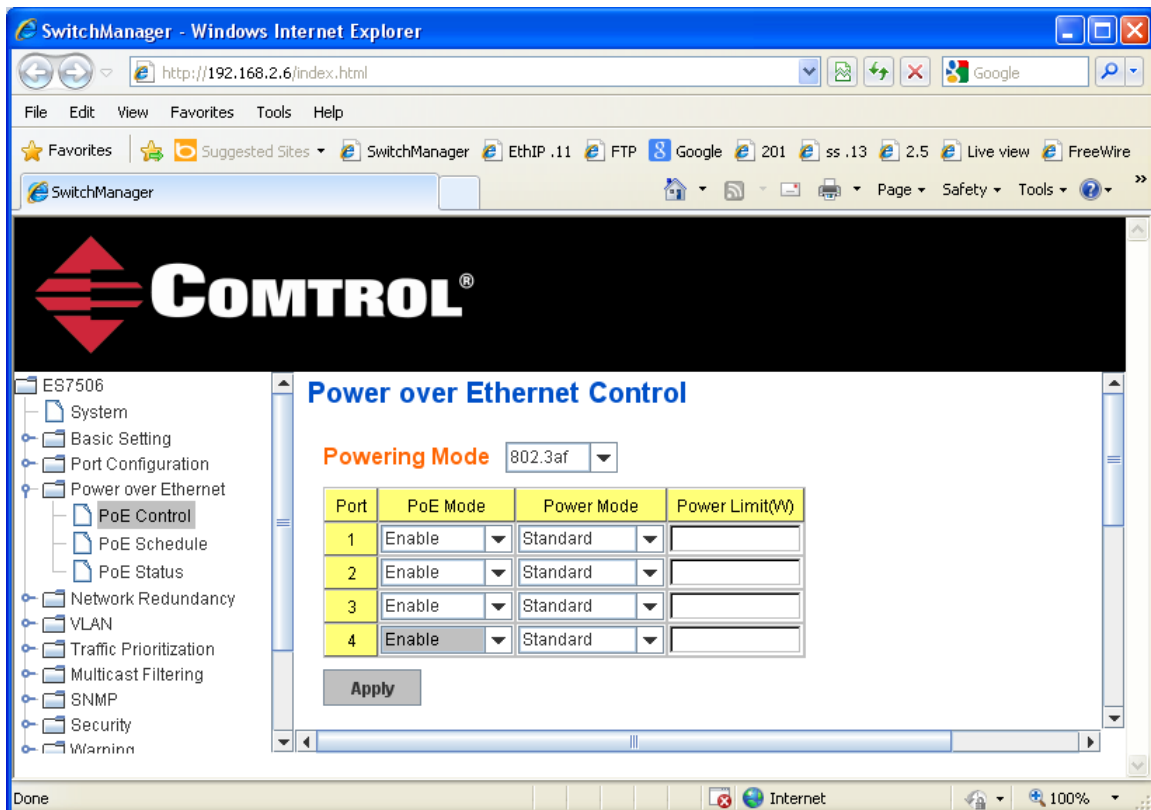
System Name	<input type="text"/>
System Location	<input type="text"/>
System Contact	<input type="text"/>
System OID	1.3.6.1.4.1.2882.2.3.1
System Description	ES7506 Industrial Managed Switch
Firmware Version	v2.1b 20100224
Device MAC	00:c0:4e:2d:00:27

Optionally set any of the values for System Name, Location or Contact information.

Select and expand the “Power over Ethernet” folder to configure the Power options.  
By default all power options are disabled.

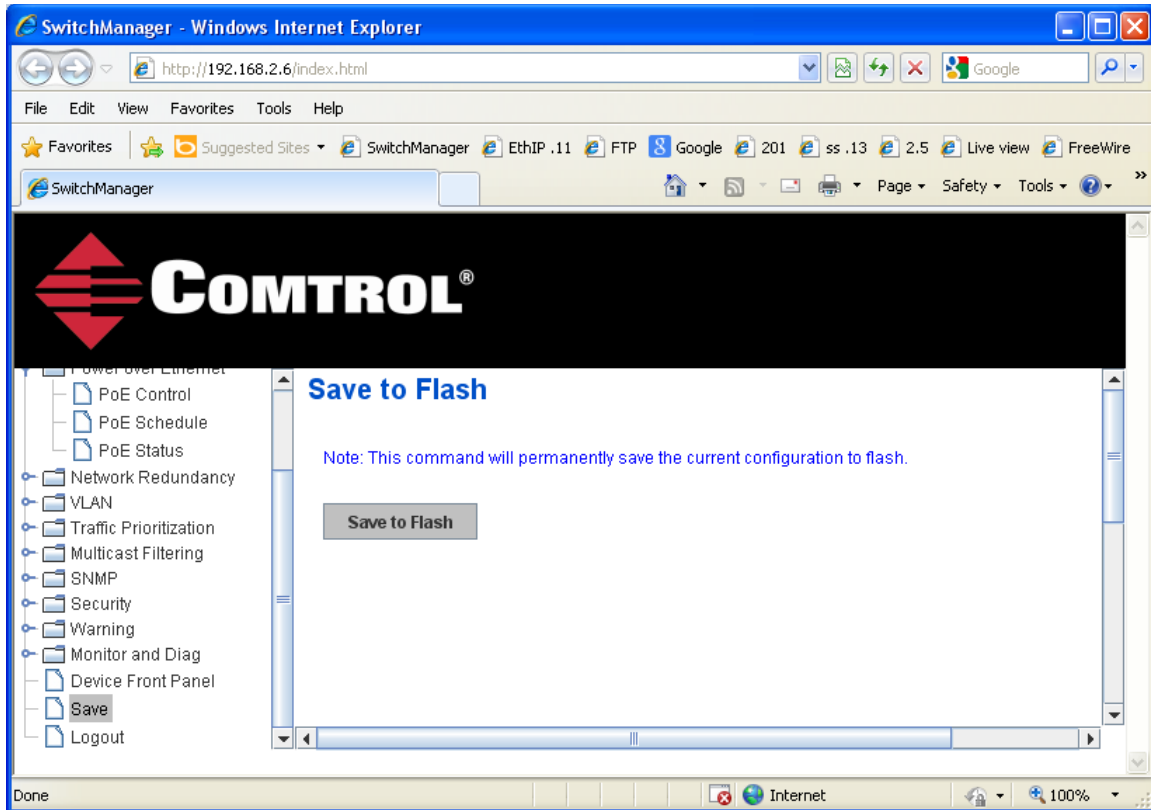


Use the drop down arrow to select Enable.  
The Power Mode should not be necessary to modify at this time.

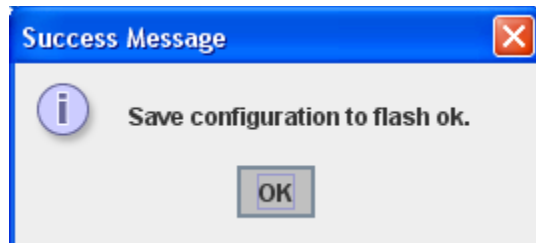


Click “Apply”  
Please note clicking Apply does not make the change permanent.

In order to make the changes permanent it is necessary to select the “Save” option in the left side menu/

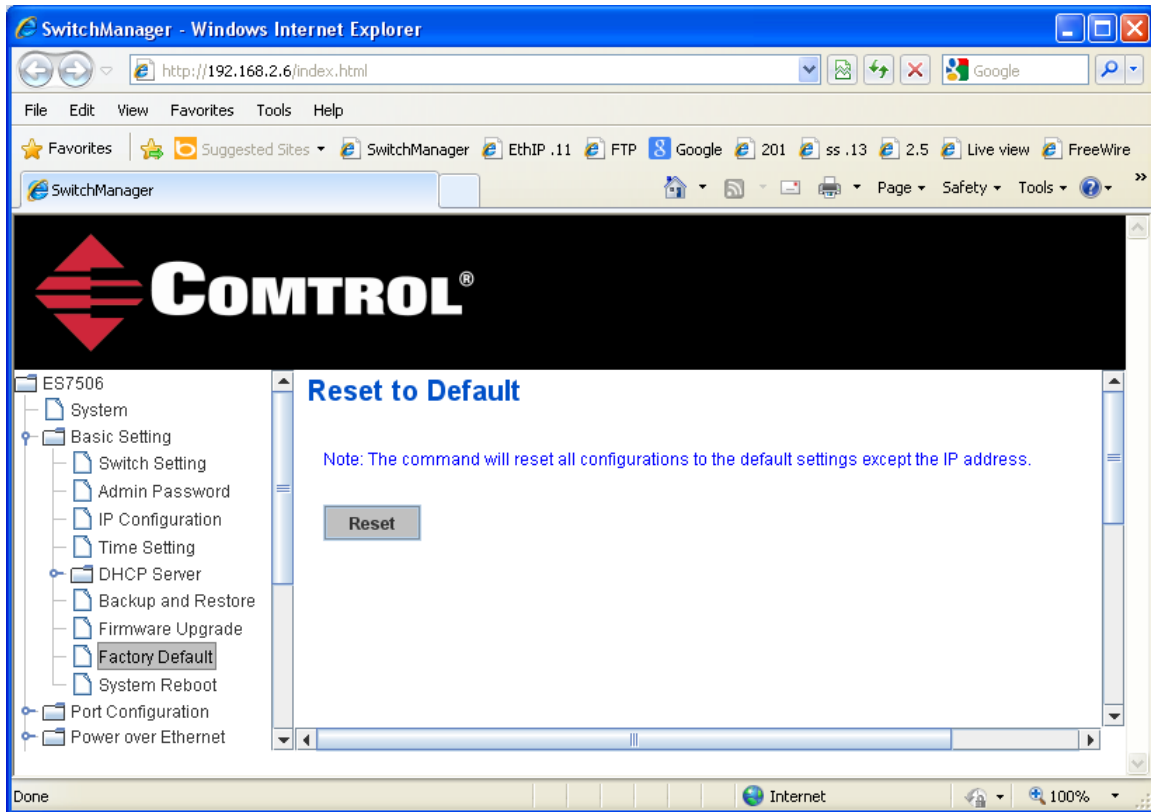


Click “Save to Falsh” to finalize the changes.

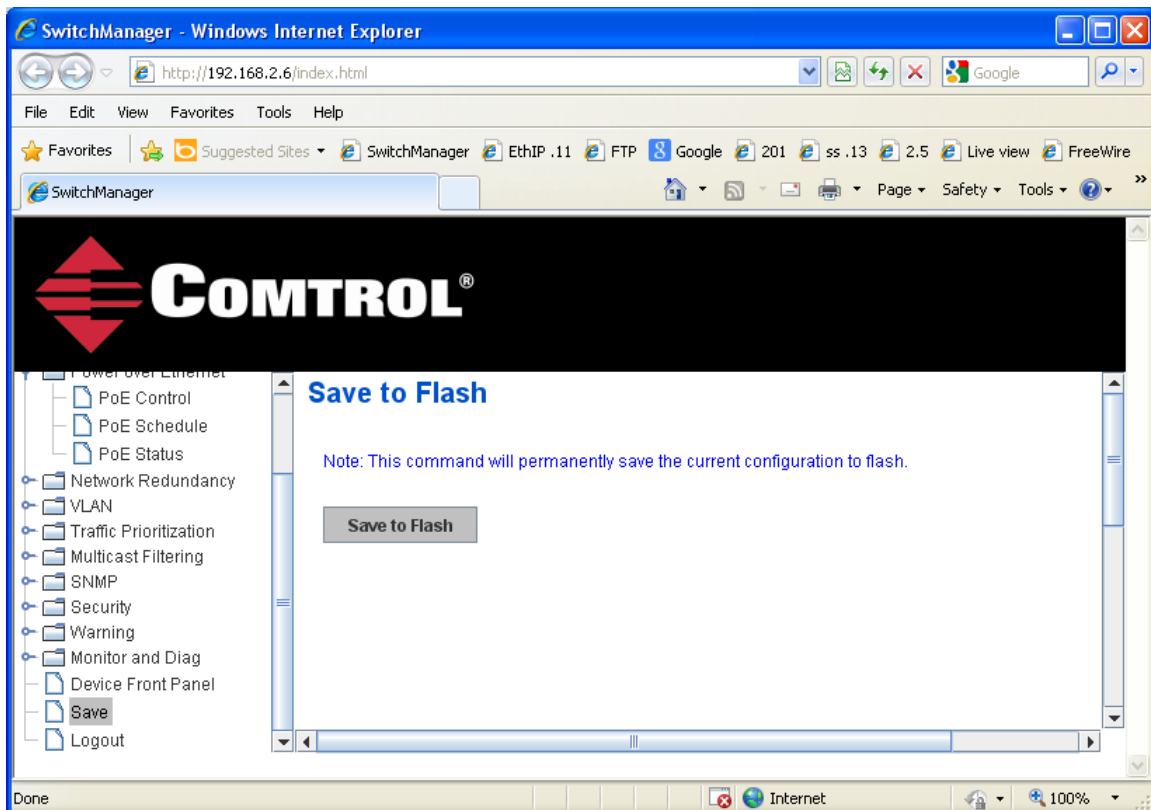


Click OK on the confirmation.

If mistakes are made you may reset the factory defaults using this page.  
This will NOT reset IP information to defaults.



Click Reset



Save to Flash.