

Java version 8 and RocketLinx

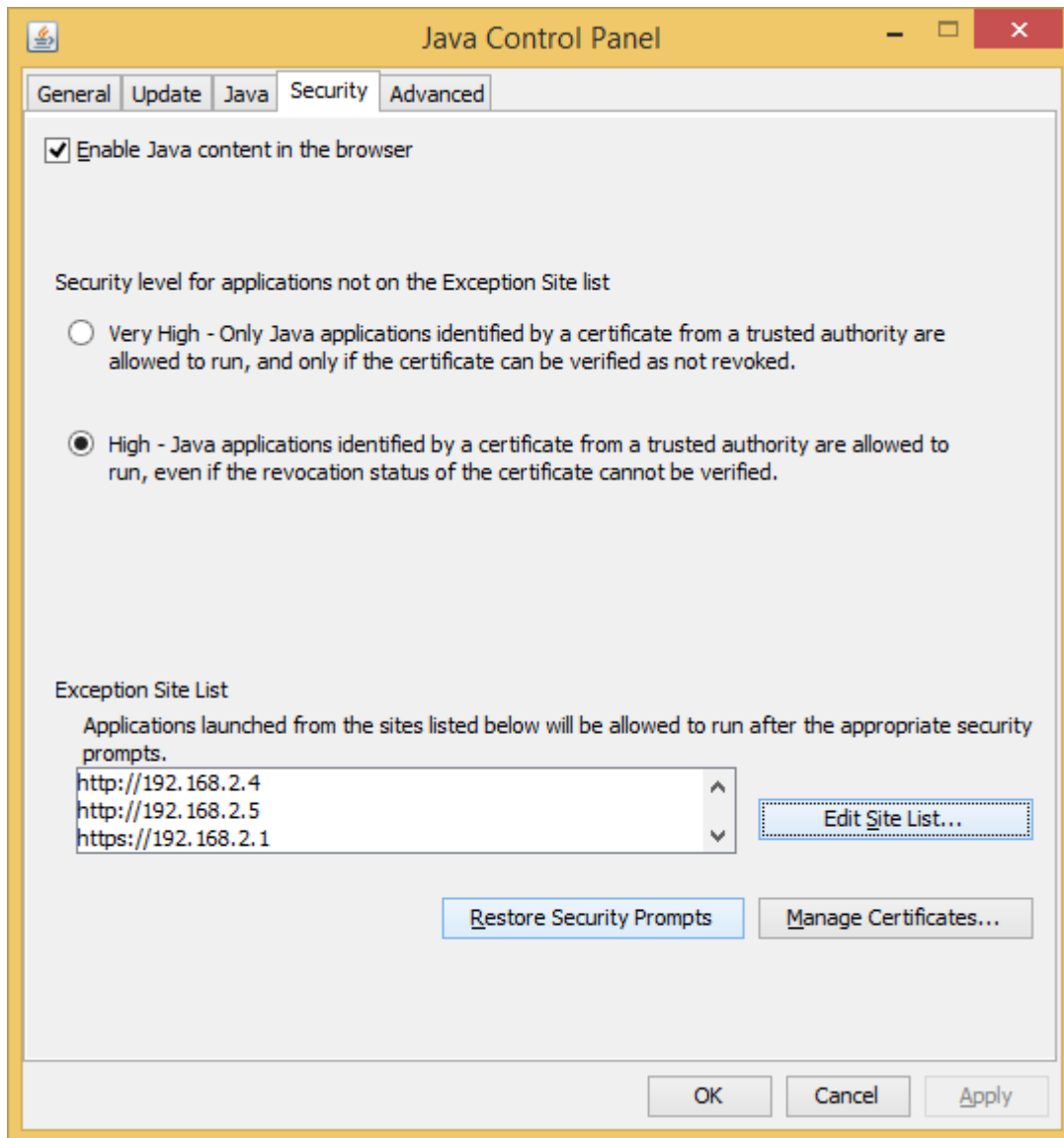
Java 8 uses a new security page that no longer allows a “Medium” security session. It is now required that each RocketLinx IP address be manually entered into an “Exception Site List” in order to open the web server built into the RocketLinx switches.

Open Control Panel in ‘Small icons’ view.

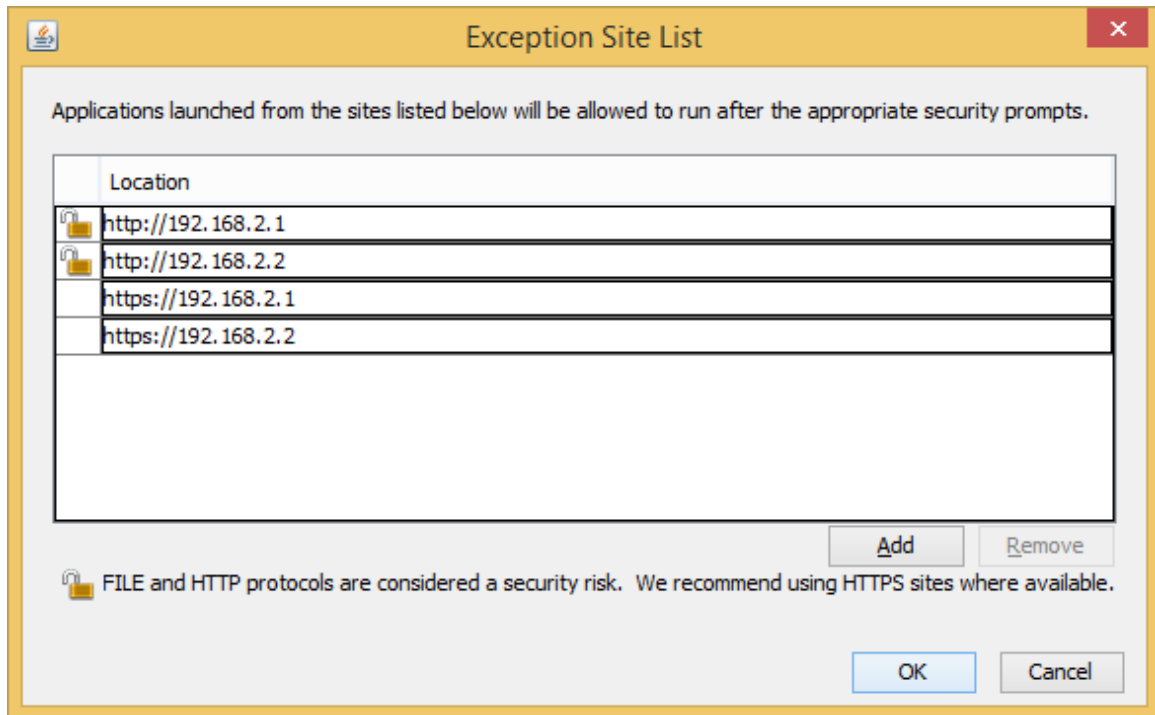
Double click the Java icon to open the Java Control Panel

Select the ‘Security’ tab

Click on the ‘Edit Site List...’ button

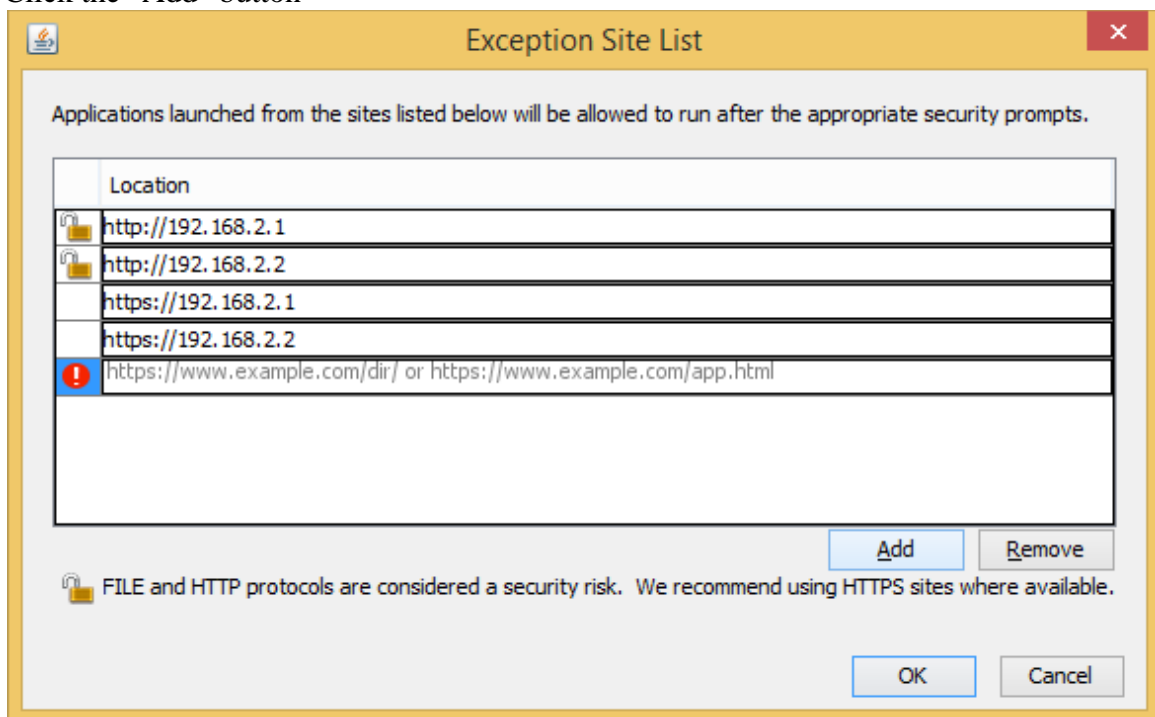


In this example some addresses have already been added. By default it is configured for ‘High’.

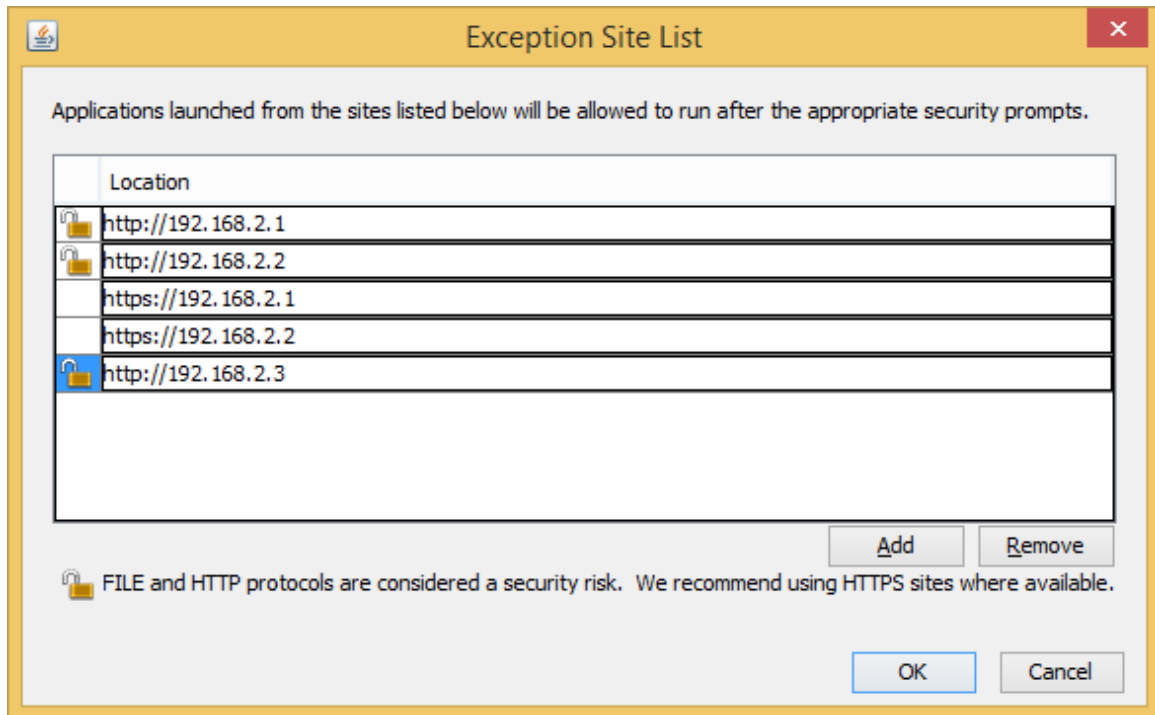


In this example some addresses have already been added.

Click the “Add” button

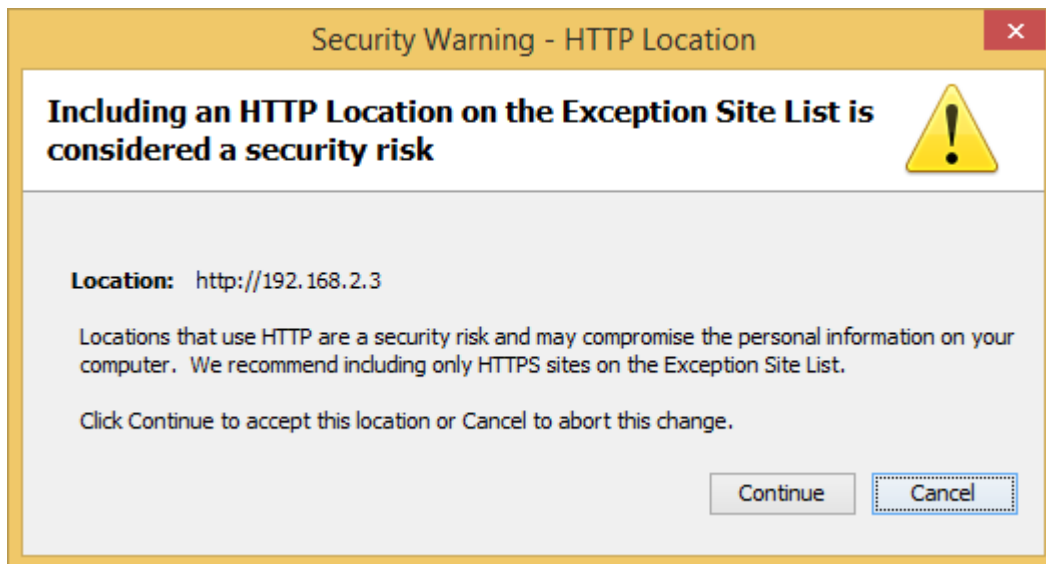


A new example entry will be added

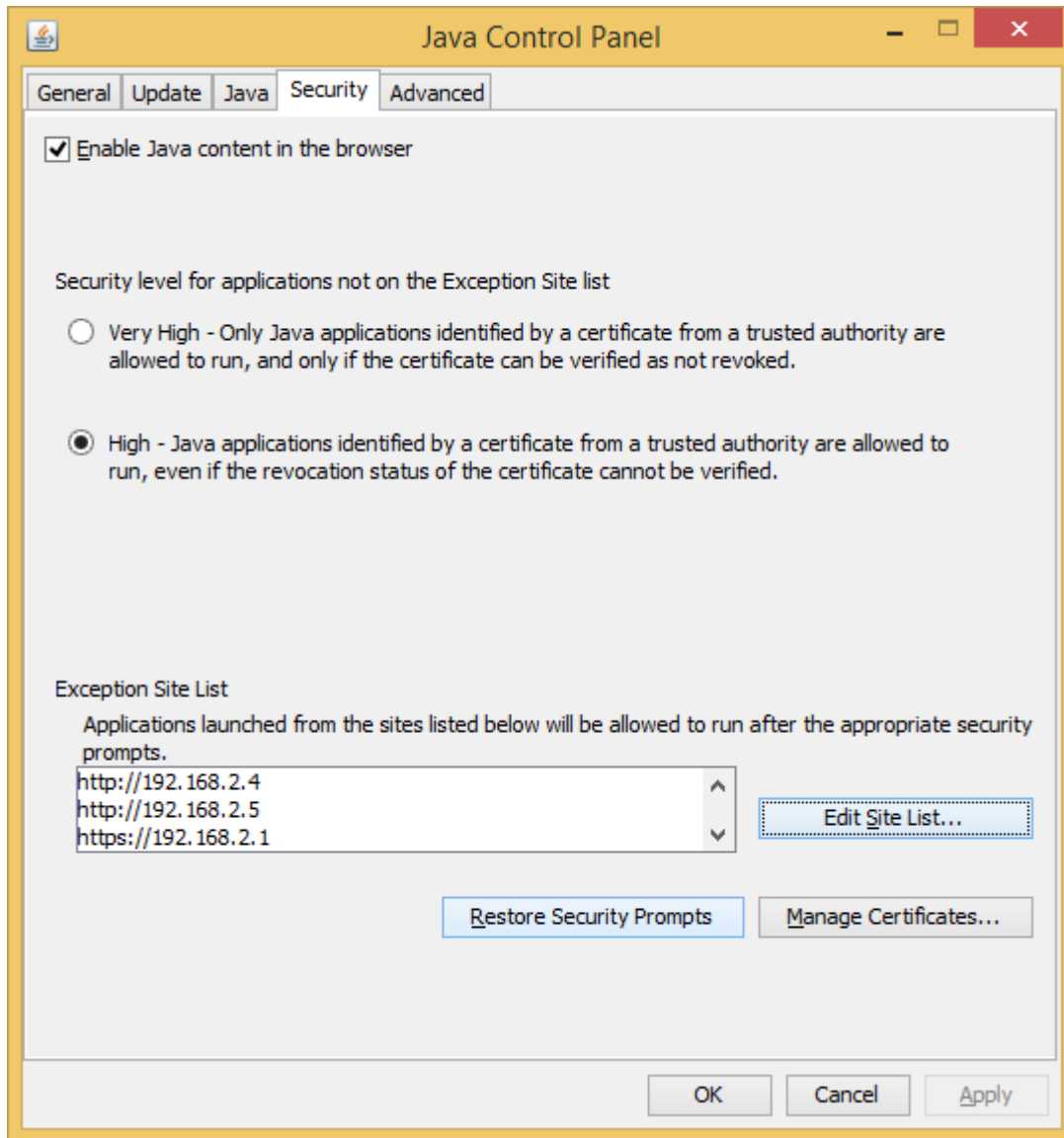


Click on the Example seen in the previous window and enter the URL address as seen here.

You may enter **http://IP** address or use **https://IP** address or you may enter both the http and https styles.



If you enter an http:// address you will get this pop-up. Click 'Continue' if you want to add this URL. Entering a https:// URL will not present this pop-up.



Now you will be able to scroll up or down to confirm the listings have been added.

Click OK to exit.