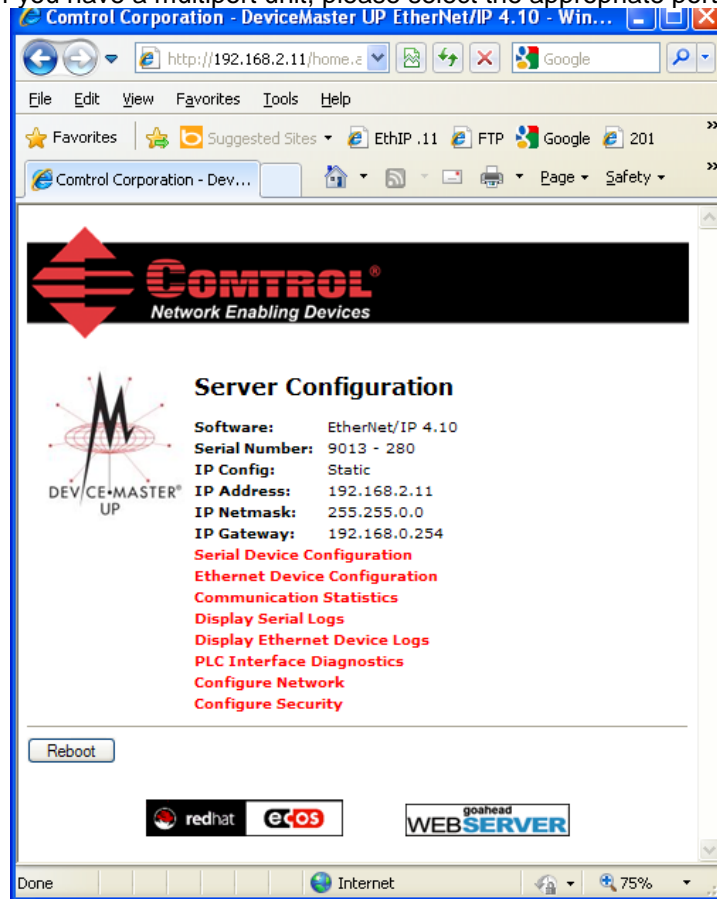
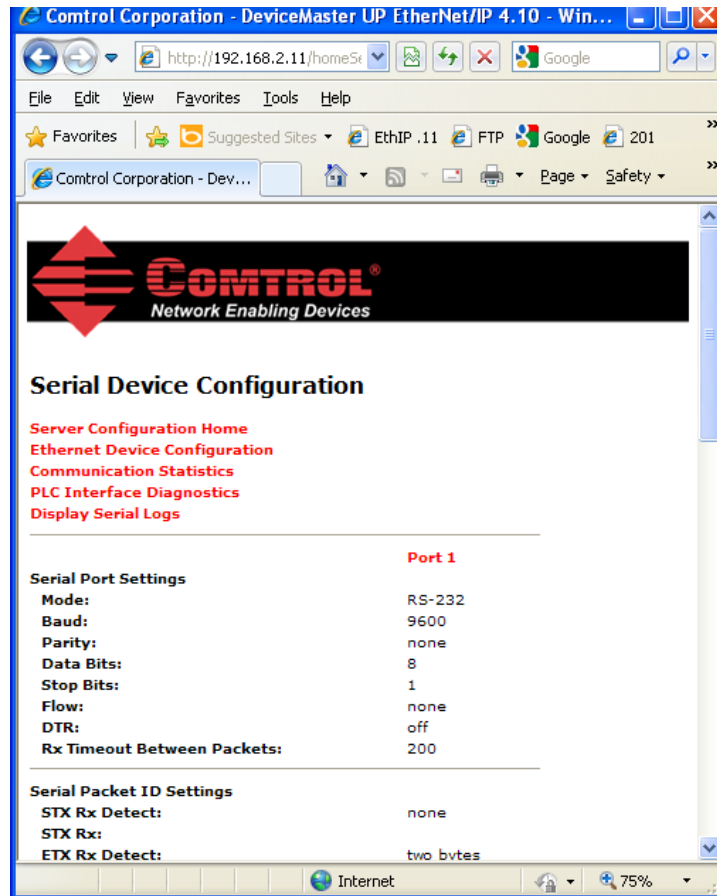


Configure Ethernet/IP to Monitor Serial Transactions using PuTTY

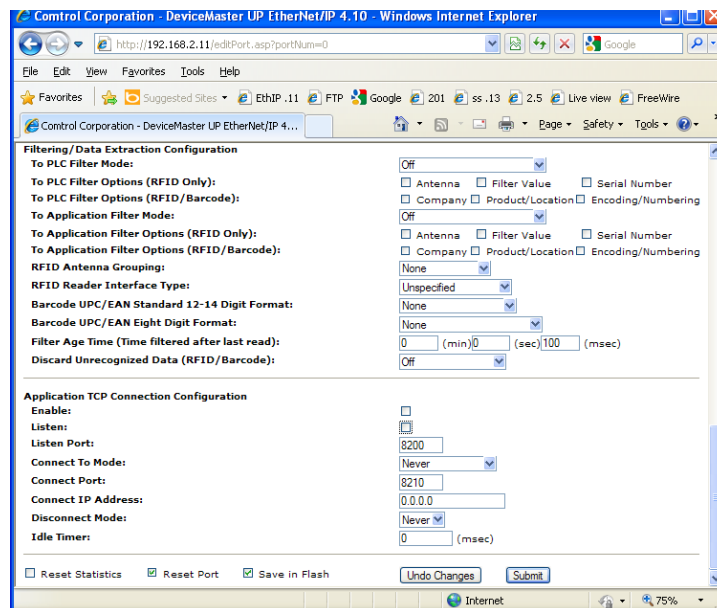
This example will show the DeviceMaster UP 1 port model.
If you have a multiport unit, please select the appropriate port#.



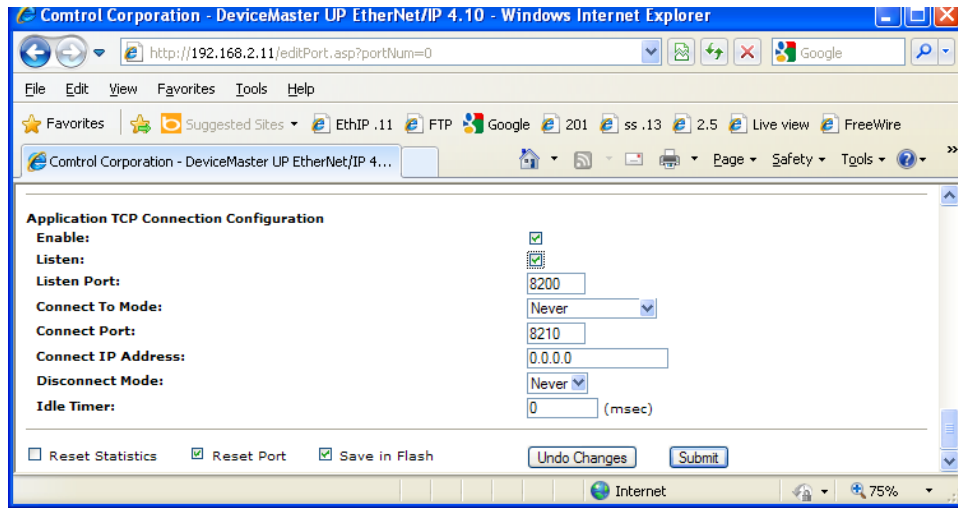
Open the web pages of the DeviceMaster.
Select the "Serial Device Configuration"



Click on **Port 1**



Scroll down to the bottom of the page to the "Application TCP Connection Configuration" and place a Checkmark in the "Enable" and "Listen" option boxes

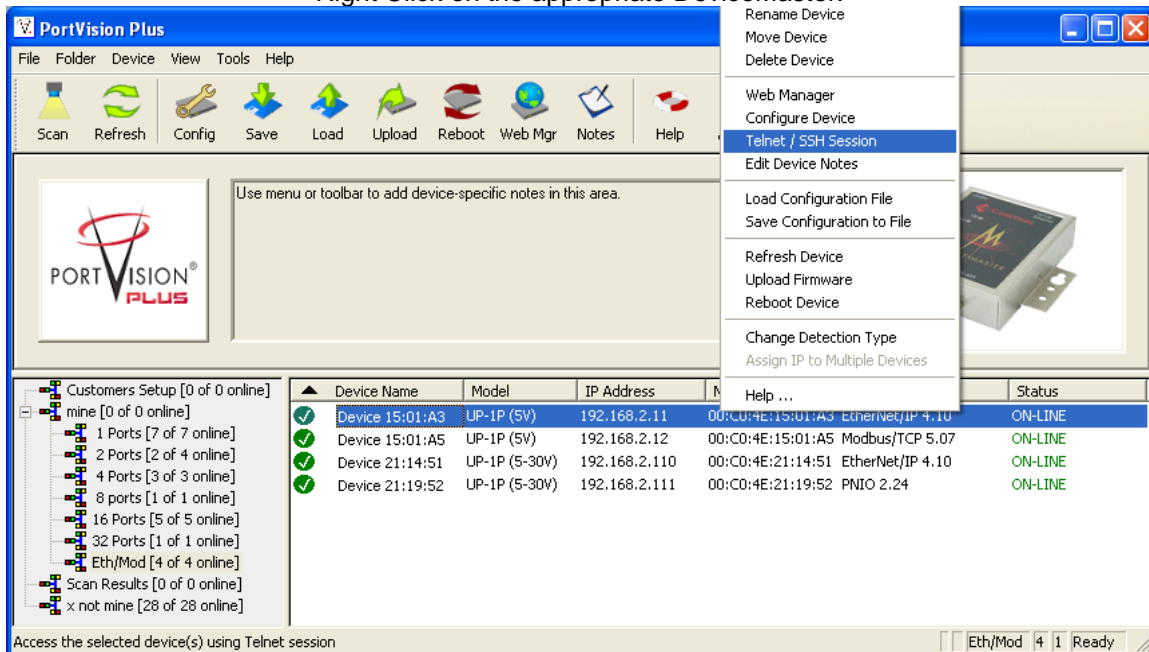


Click on Submit

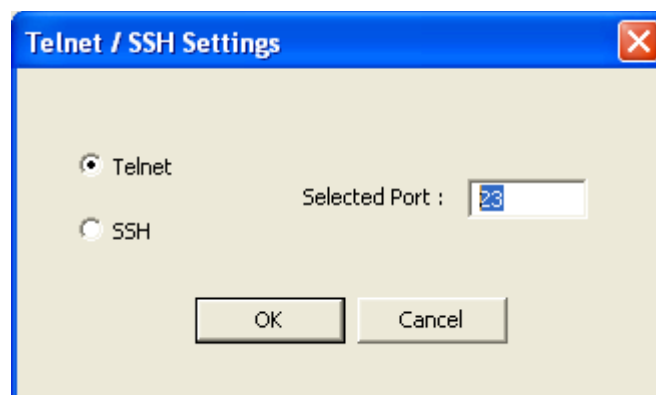
That is all that needs to be modified in the DeviceMaster. You may close the browser if desired.

In PortVision Plus

Right Click on the appropriate DeviceMaster.

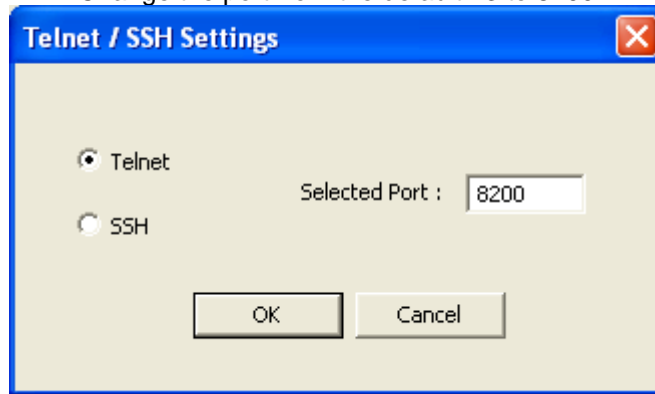


Select Telnet / SSH Session from the pop-up menu.

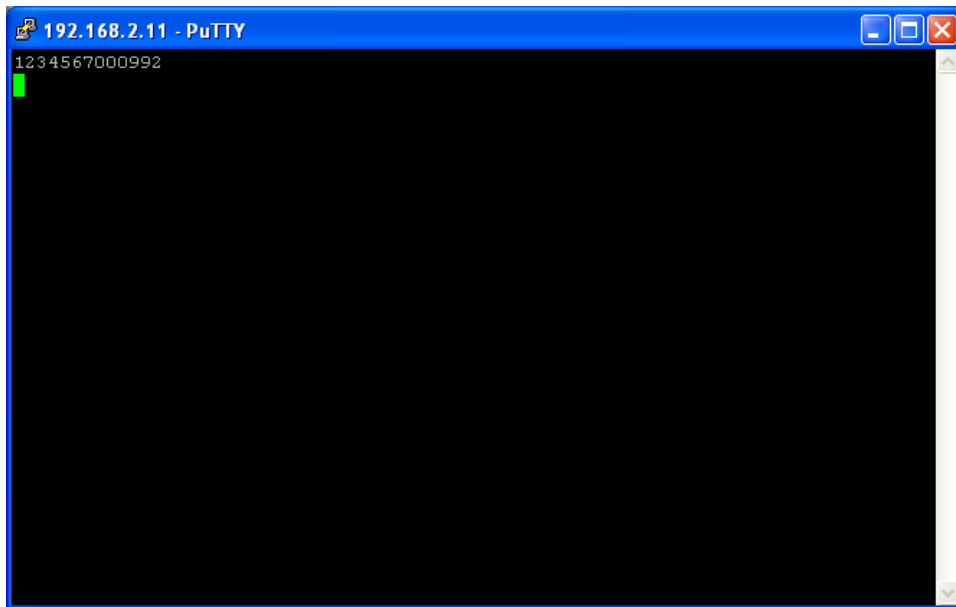


Telnet and Selected Port of 23 will be the defaults

Change the port from the default 23 to 8200



Click OK

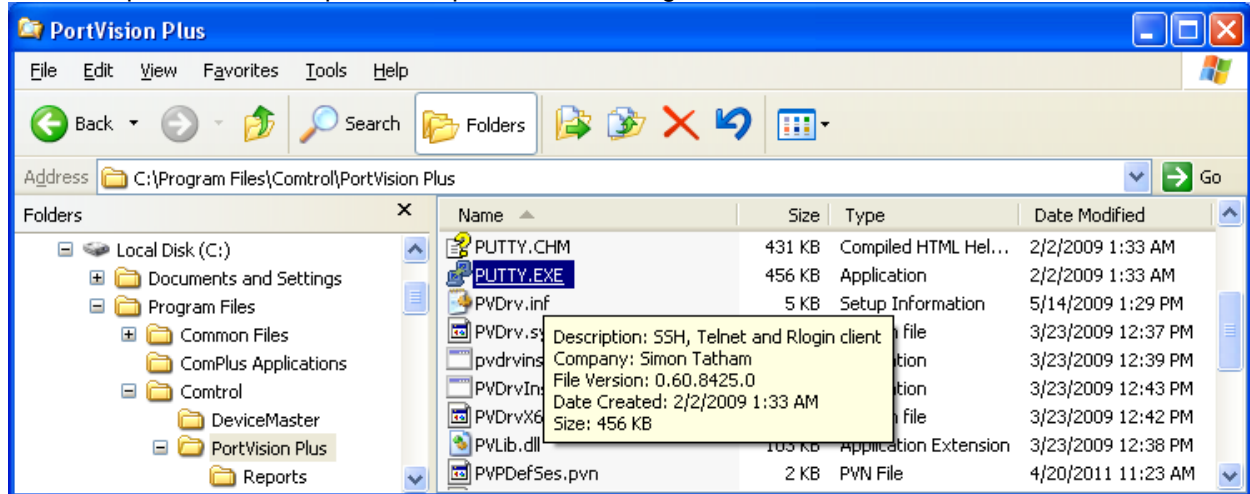


PuTTY will open and display all transactions from the serial port.
Here you can see a bar code that has been scanned.

This will not save the data to a text file. PuTTY must be configured for this functionality.
The following guide will show how to configure PuTTY to record the serial data to a text file.

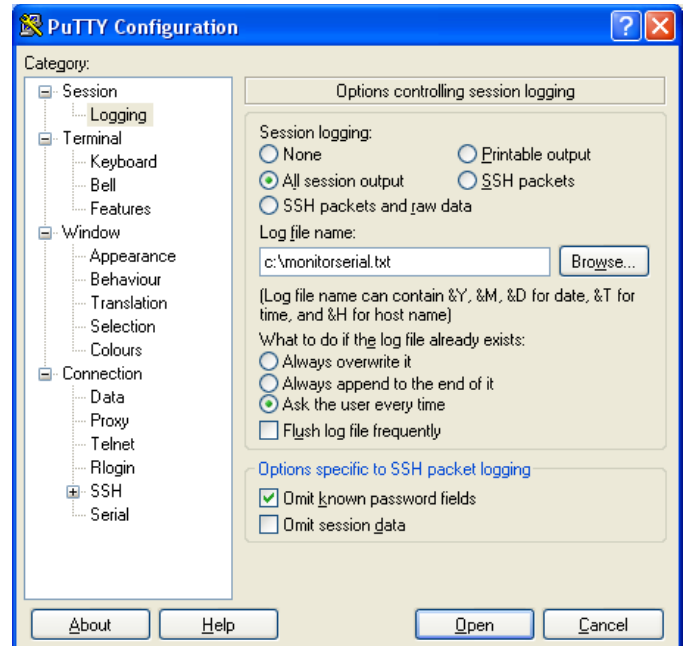
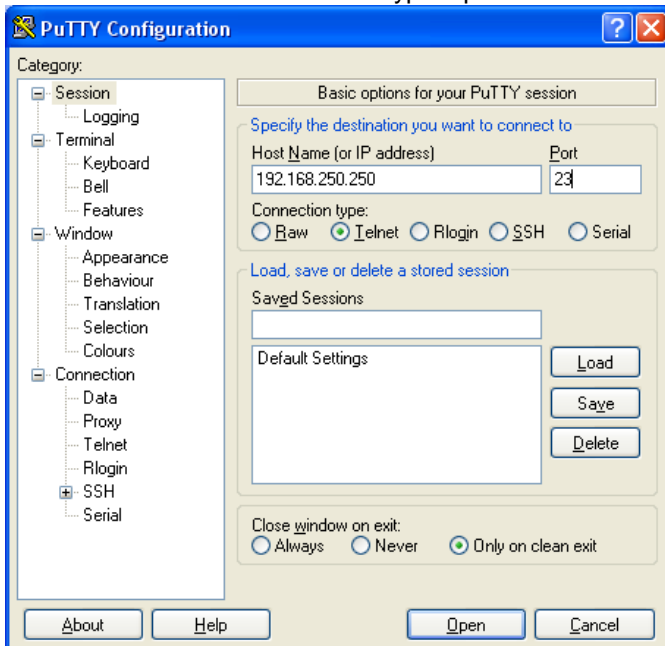
Configure PuTTY to save to a file

Open Windows Explorer and path to the C:\Program Files\Control\PortVision Plus folder



You will see a file called PUTTY.EXE which you will double click to launch
C:\Program Files\Control\PortVision Plus\putty.exe

Enter the appropriate IP Address of the DeviceMaster
and use Socket 23 as shown here.
Be sure to set the 'Connection Type' option for 'Telnet'



Click the Logging folder
For session Logging, select the "All session output"
Enter the log file path and name as desired.
In this example c:\monitorserial.txt is used.
Remove the checkmark in the "Flush log file frequently"
Option and Click Open

All session logging in this example will be saved to the 'C' drive root in monitorserial.txt.

To make these the default settings used whenever PuTTY is run, return to the 'Session' folder,
select the "Default Settings" and click the Save button.

You may wish to remove the IP address and Port value in the 'Session' (left screen) before saving,
if you plan to use PuTTY to connect to more than a single IP address.