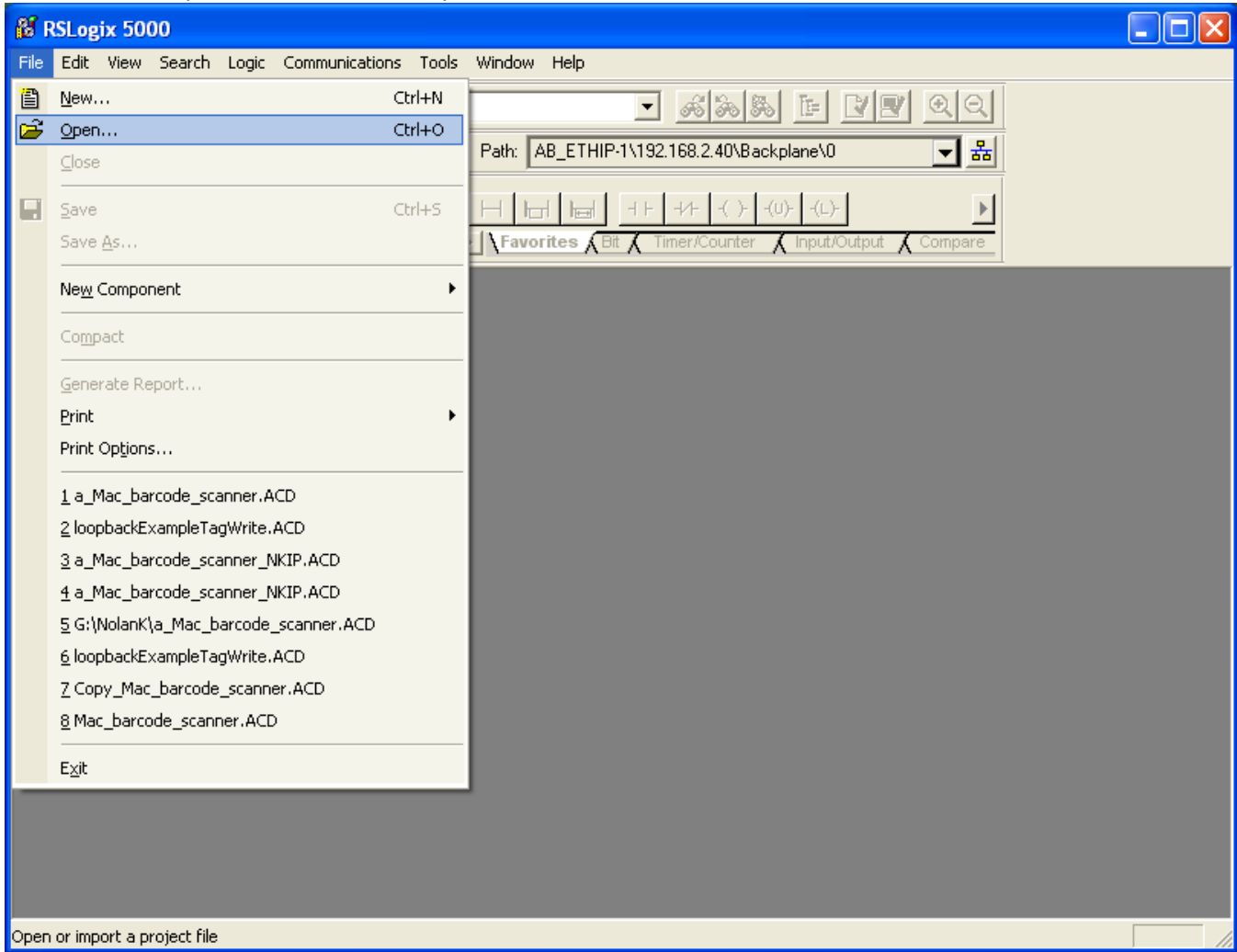
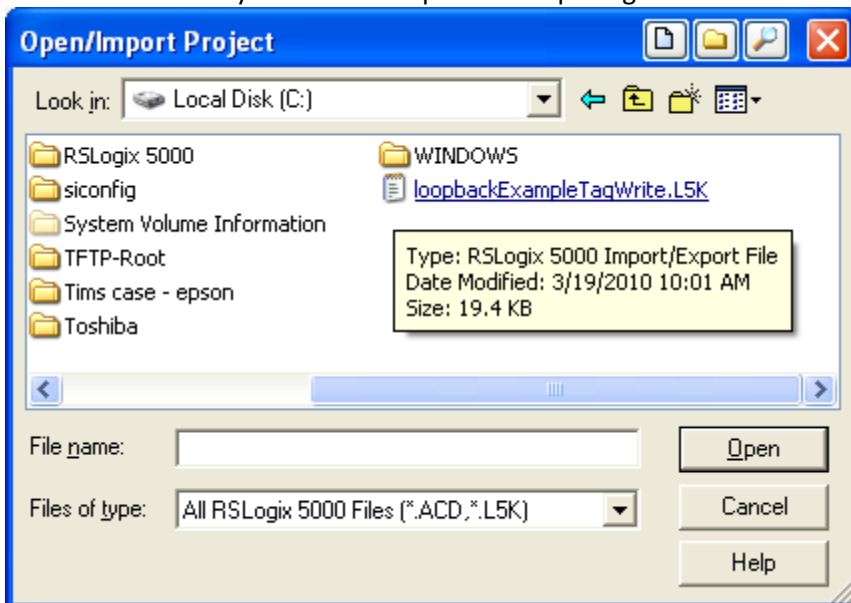


Import sample code into your PLC

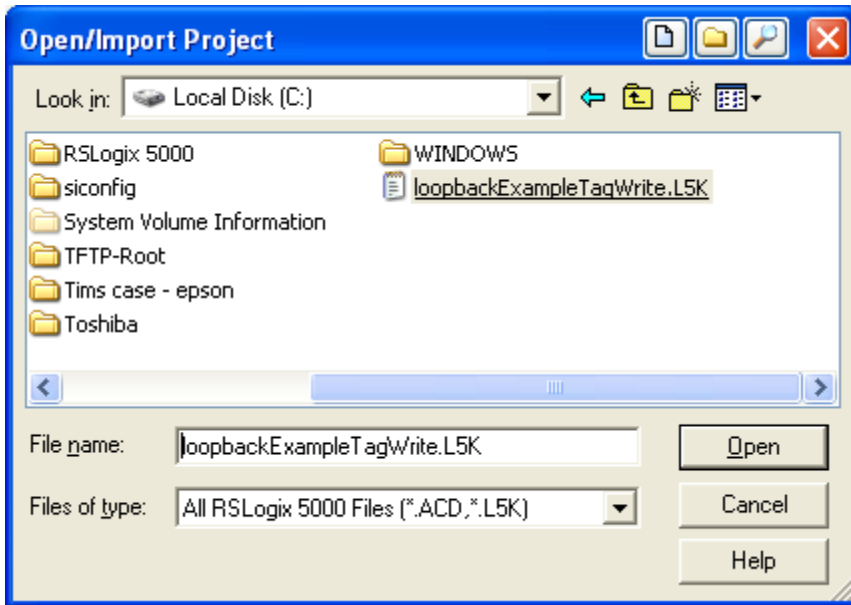
From the file drop down menu select "Open"



Path to the directory where the loopbackExampleTagWrite.L5K exists

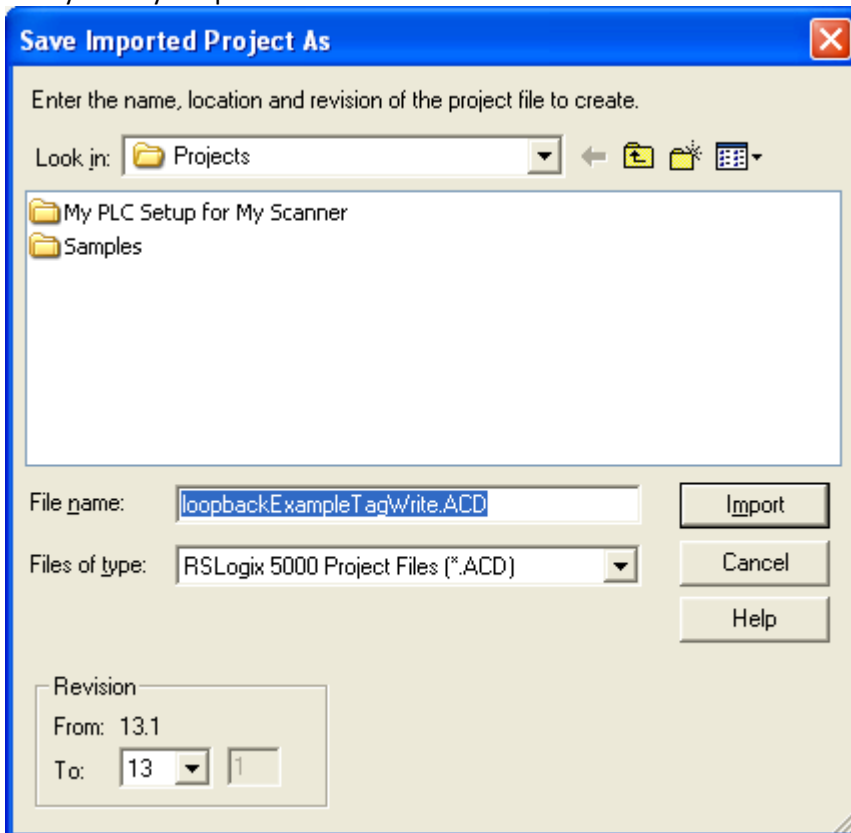


In this example the file is in the root of the "C" drive.



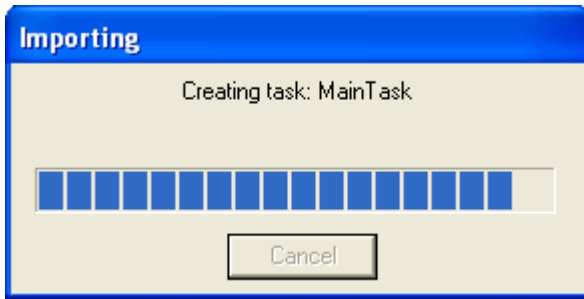
Select the file and click "Open"

Now you may "Import" the file

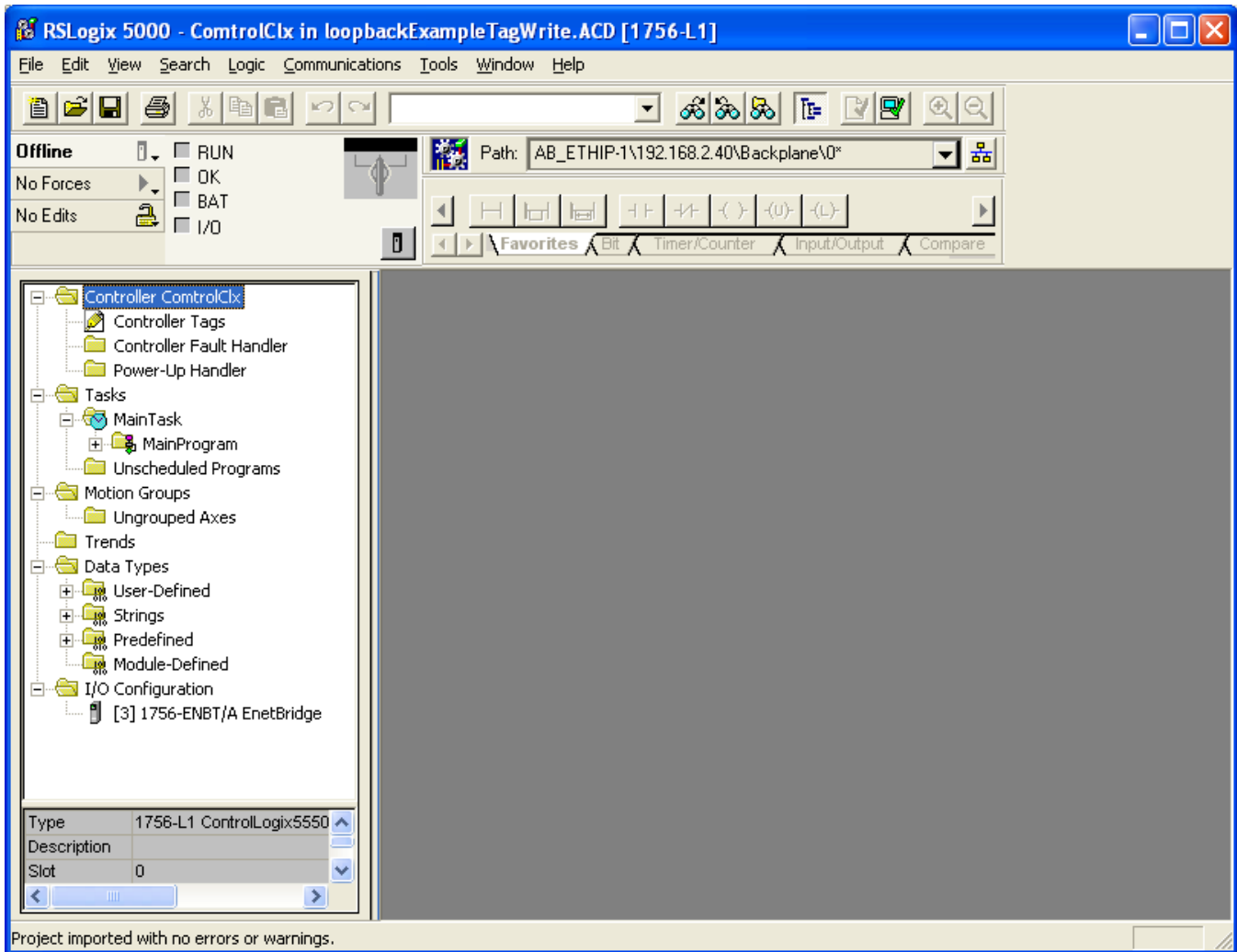


Click "Import"

It will create the Main Task.



Which will be seen here.



Configure the I/O Configuration as necessary for your PLC.