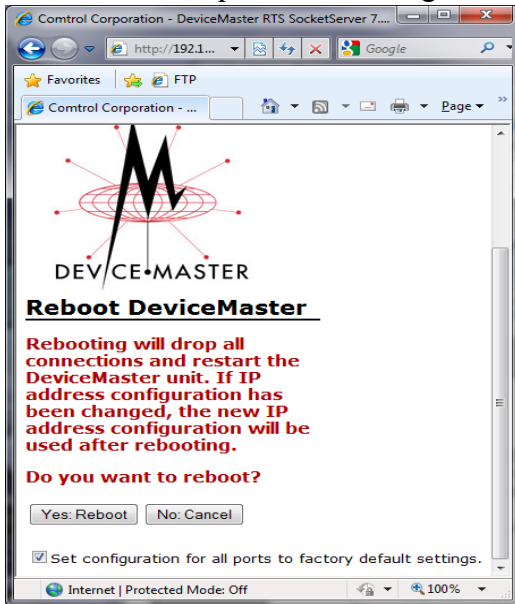


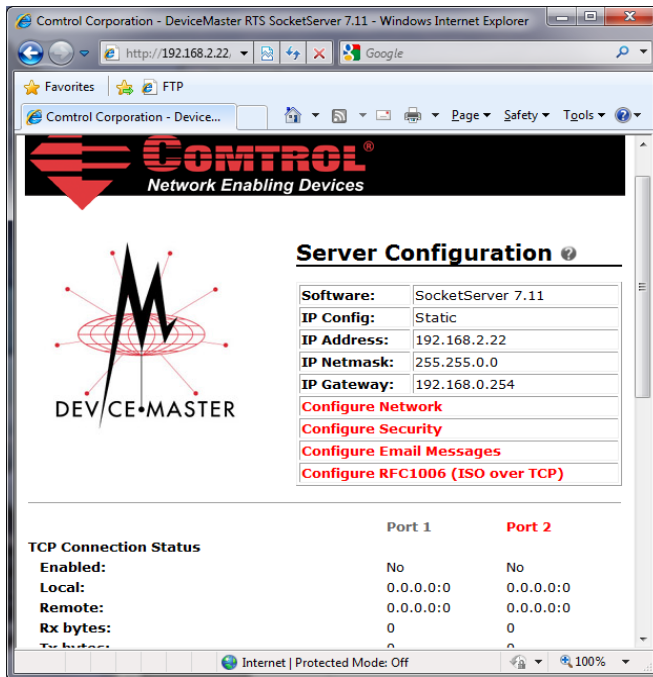
# SocketMode Serial Port Testing with Putty

Start by resetting the DeviceMaster to factory defaults.  
Open the web page of the DeviceMaster.  
Scroll to the bottom of the page and click the Reboot button

A confirmation page will be presented.  
Checkmark the option “Set configuration for all ports to factory default settings”



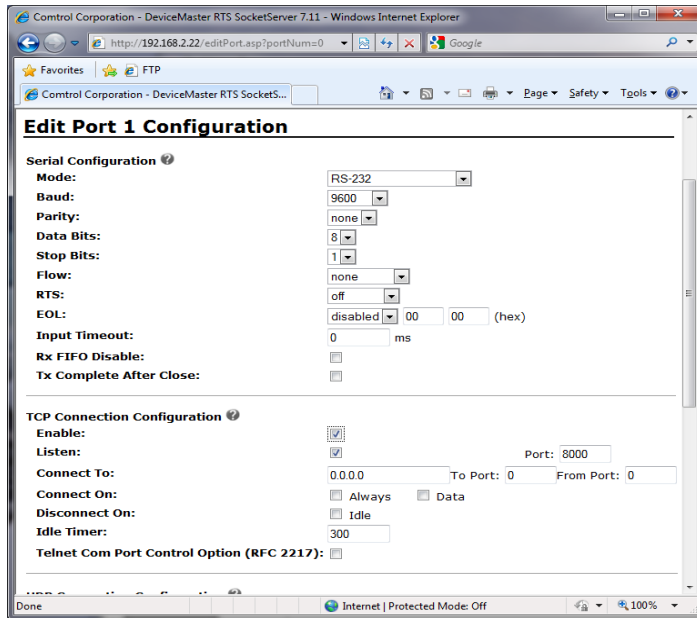
Click the **Yes Reboot** button



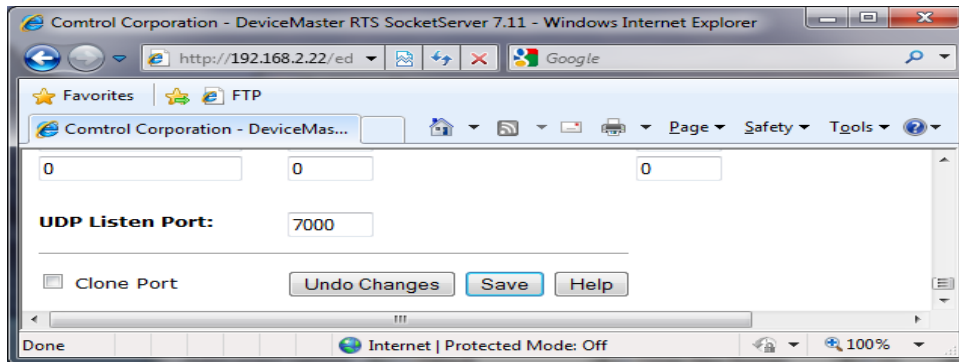
Re-open the web pages.  
Click on the appropriate port (in this example port 1 is selected)

The serial settings do not matter in this case.

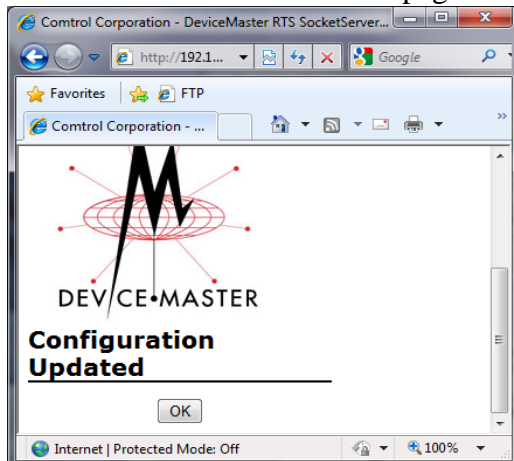
Select **ONLY** the enable option in the TCP Connection Configuration. Leave everything else at defaults.



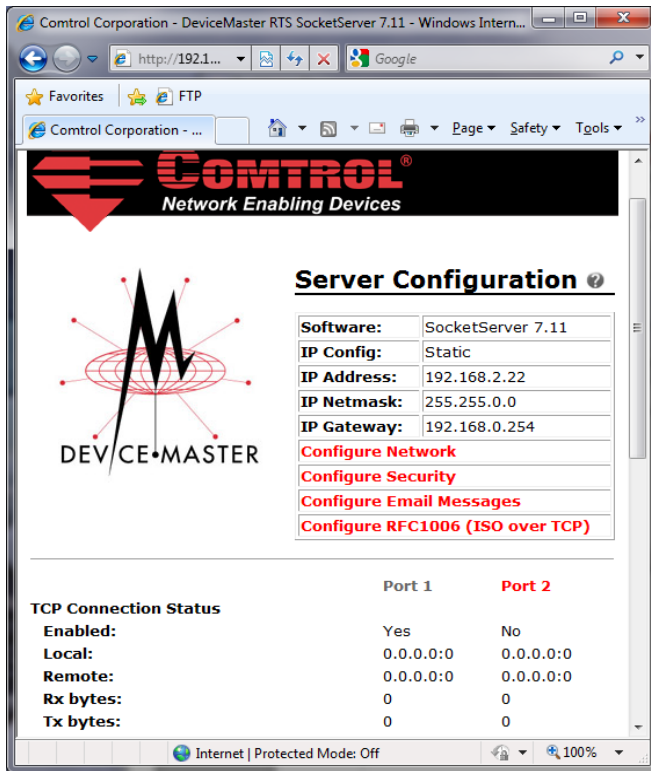
Scroll to the bottom and click **Save**



Click **OK** on the confirmation page.

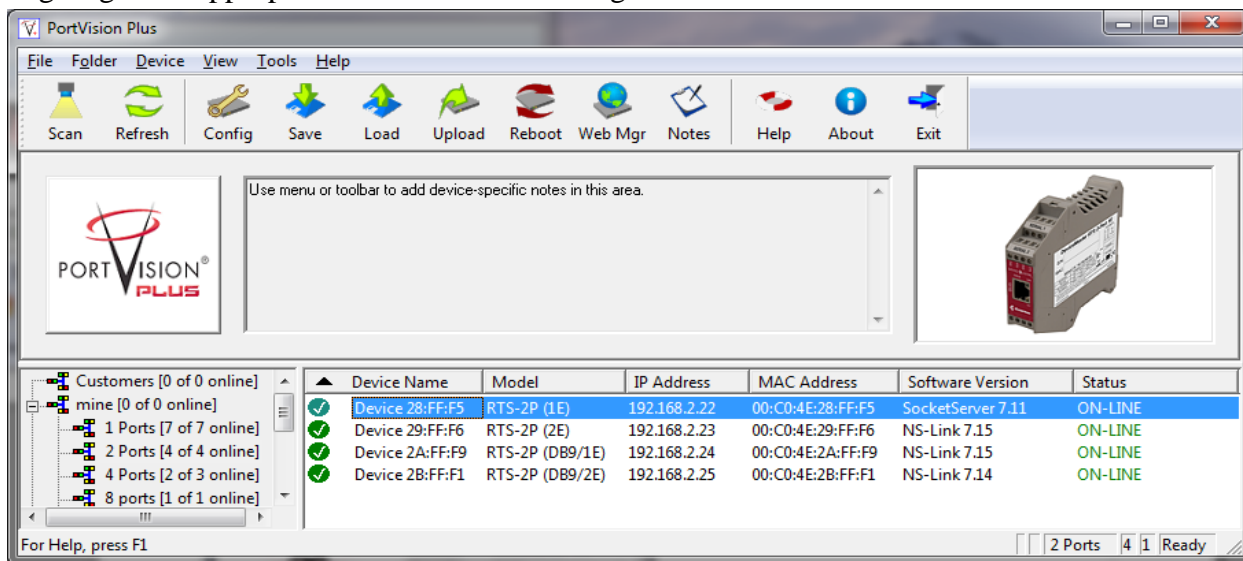


If necessary, close and re-open the web page.  
 You should show this

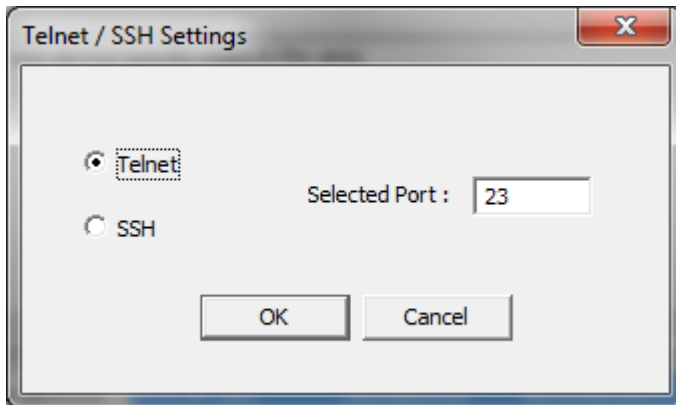


Attach the Loopback Plug supplied with the DeviceMaster to the appropriate physical port.  
 (In this example, port 1)  
 This test must use the Loopback Plug. If you do not have a Loopback Plug you may download  
[ftp://ftp.comtrol.com/tech\\_misc/cabling/loopback-plugs.pdf](ftp://ftp.comtrol.com/tech_misc/cabling/loopback-plugs.pdf) to build your own.

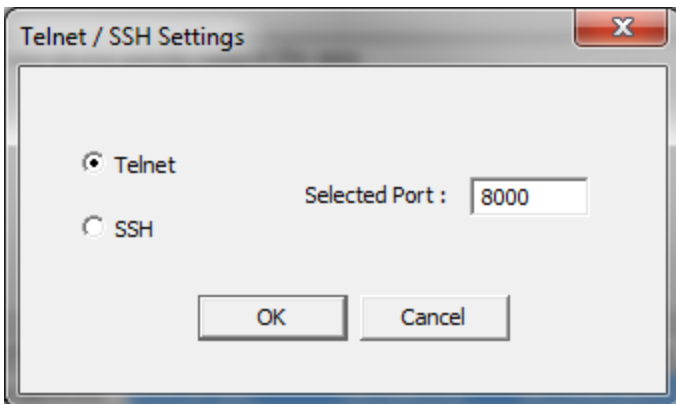
Go to PortVision Plus  
 High-light the appropriate DeviceMaster and right-click on it.



Select “Telnet / SSH” from the pop-up menu.  
This dialog will appear

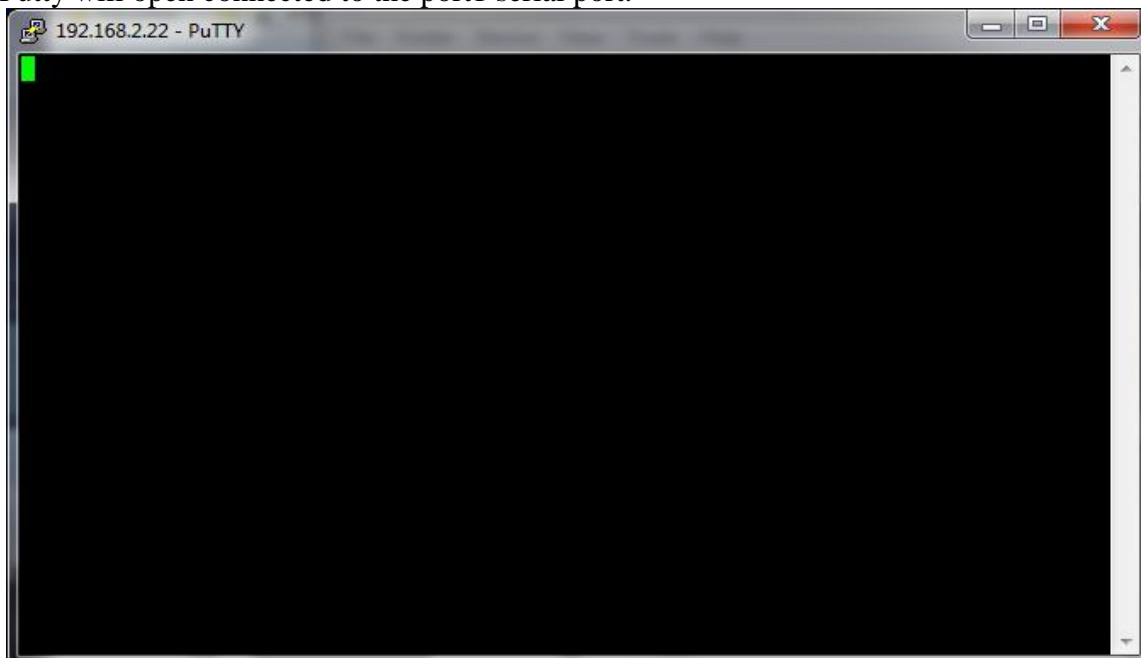


Enter the appropriate socket number (In this example port1 default socket is 8000)

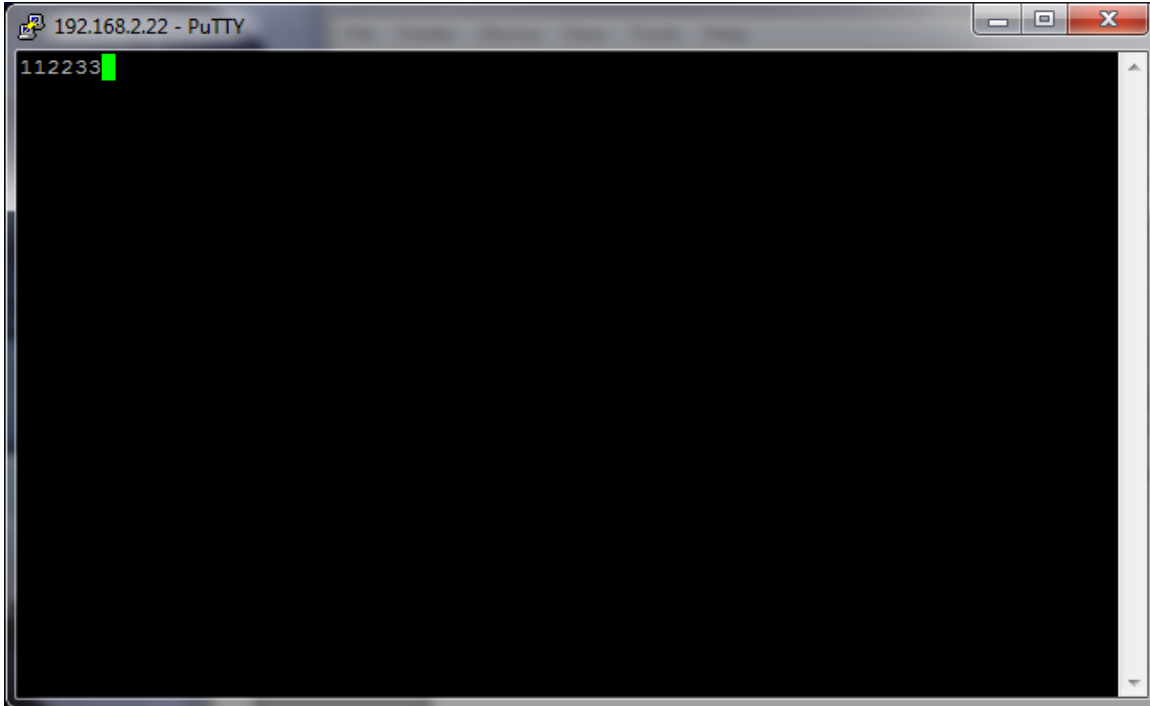


Click **OK**

Putty will open connected to the port1 serial port.



Enter 123



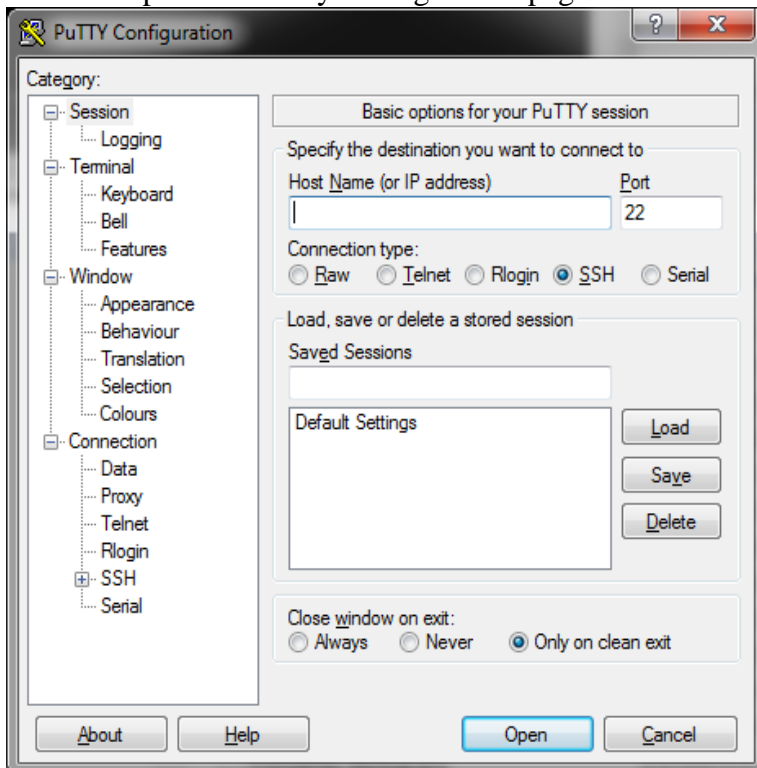
If 112233 is displayed, Putty needs to have local echo disabled.

In many cases, Putty will automatically know when to disable local echo. If it does not however, You may force it off.

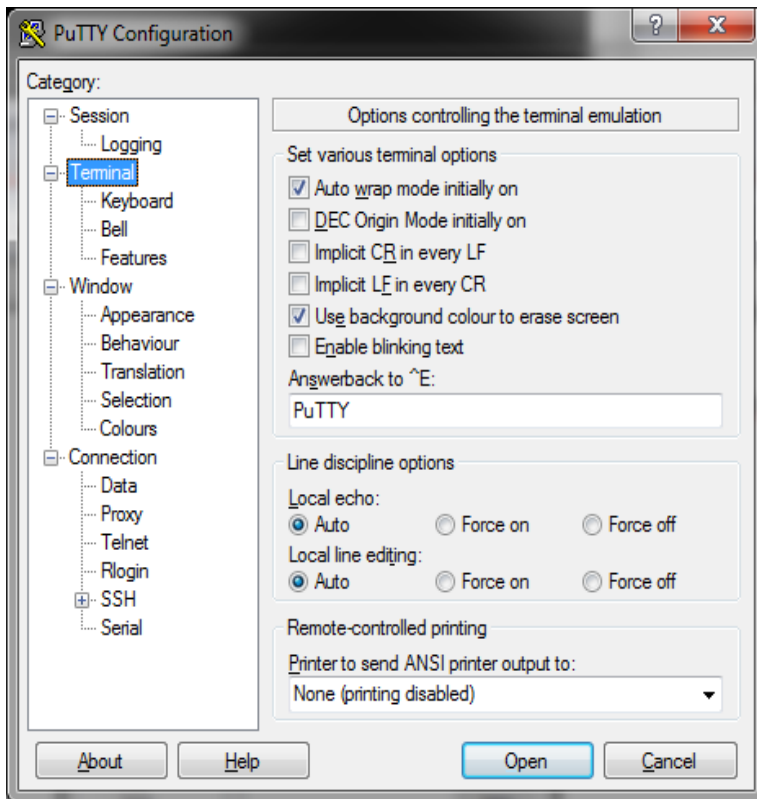
To disable local echo:

Go to C:\Program Files (x86)\Control\PortVision Plus and run putty.exe

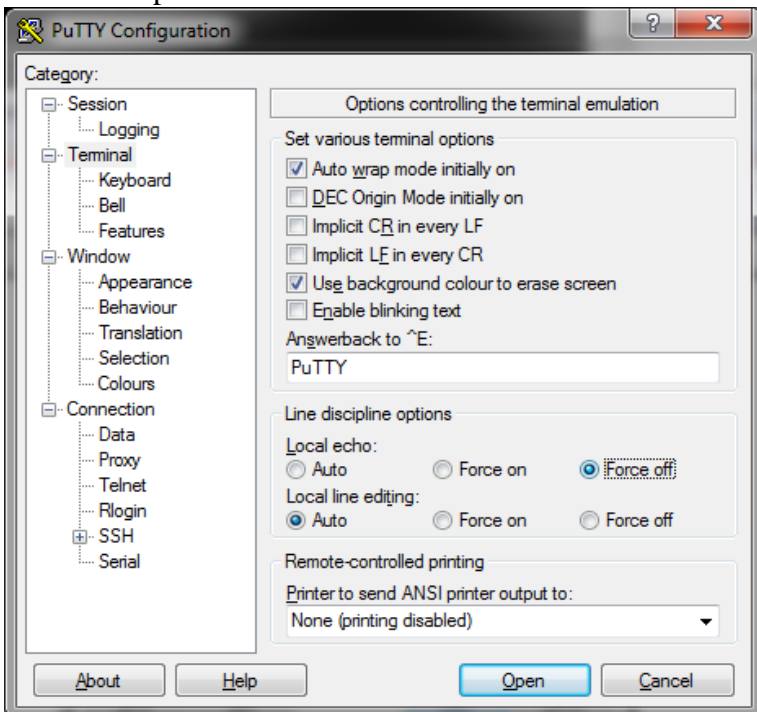
This will open the PuTTY Configuration pages.



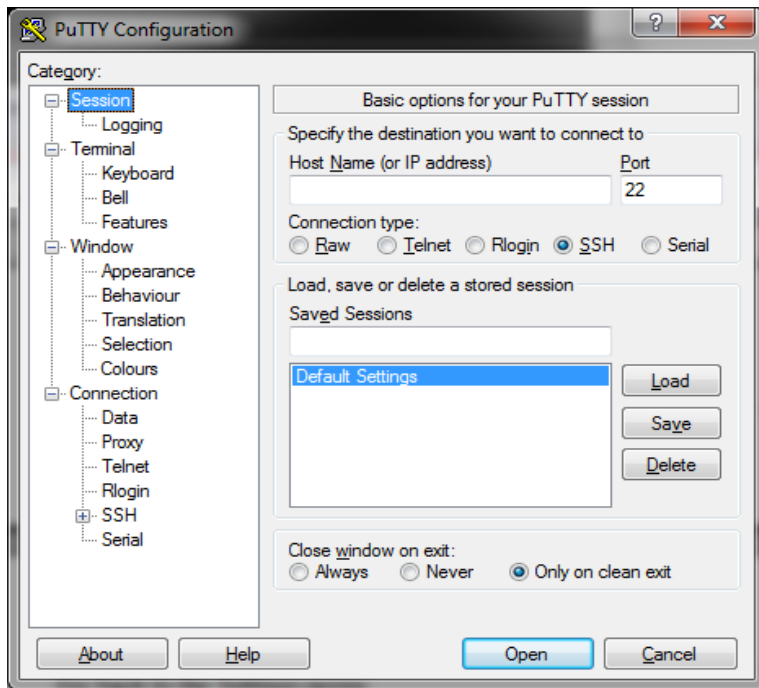
Select "Terminal"



Select the option for Local echo: to "Force off"

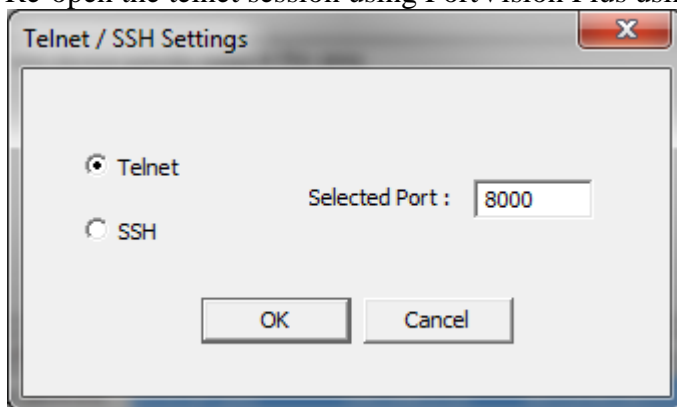


Go back to the Sessions menu  
Select Default Settings and click on **Save**  
Close the PuTTY Configuration window.

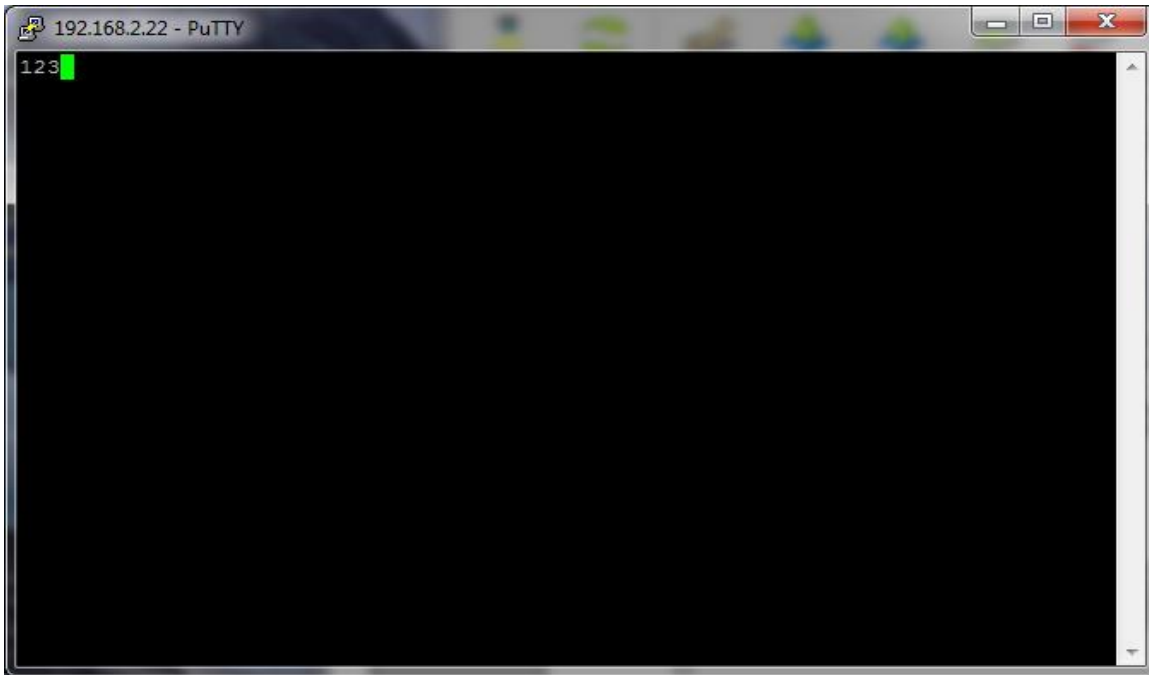


Close the open telnet session.

Re-open the telnet session using PortVision Plus using the 8000 port.

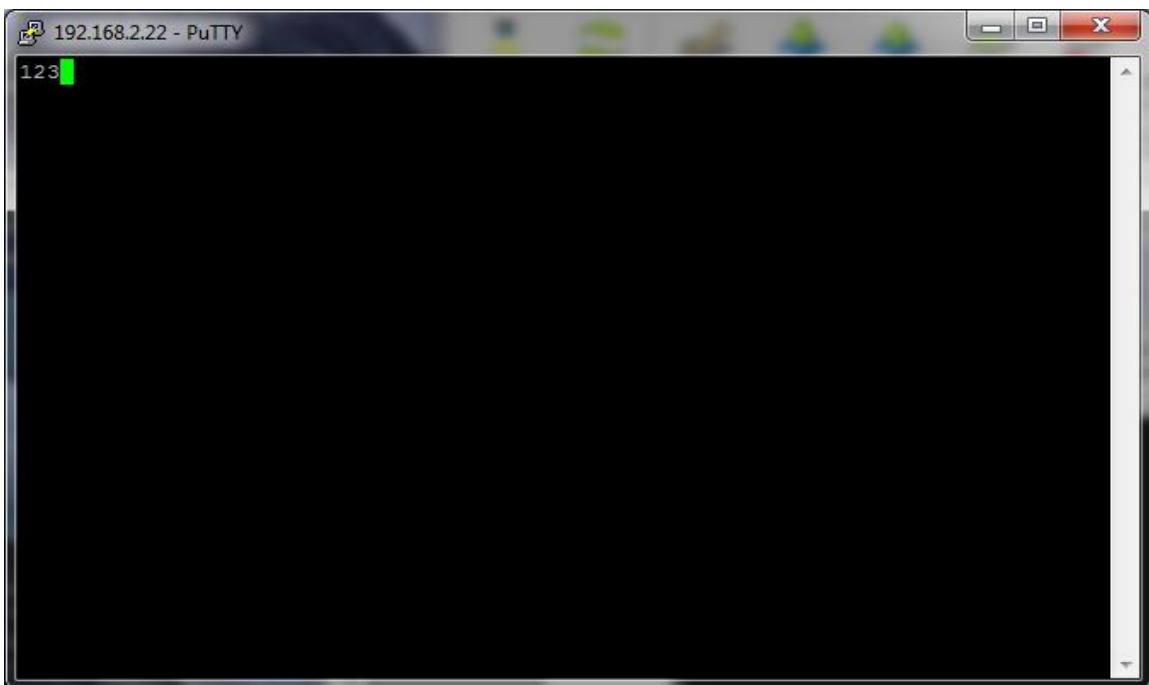


PuTTY will open  
enter 123



Single digits should appear.  
Remove the Loopback Plug from the DeviceMaster.

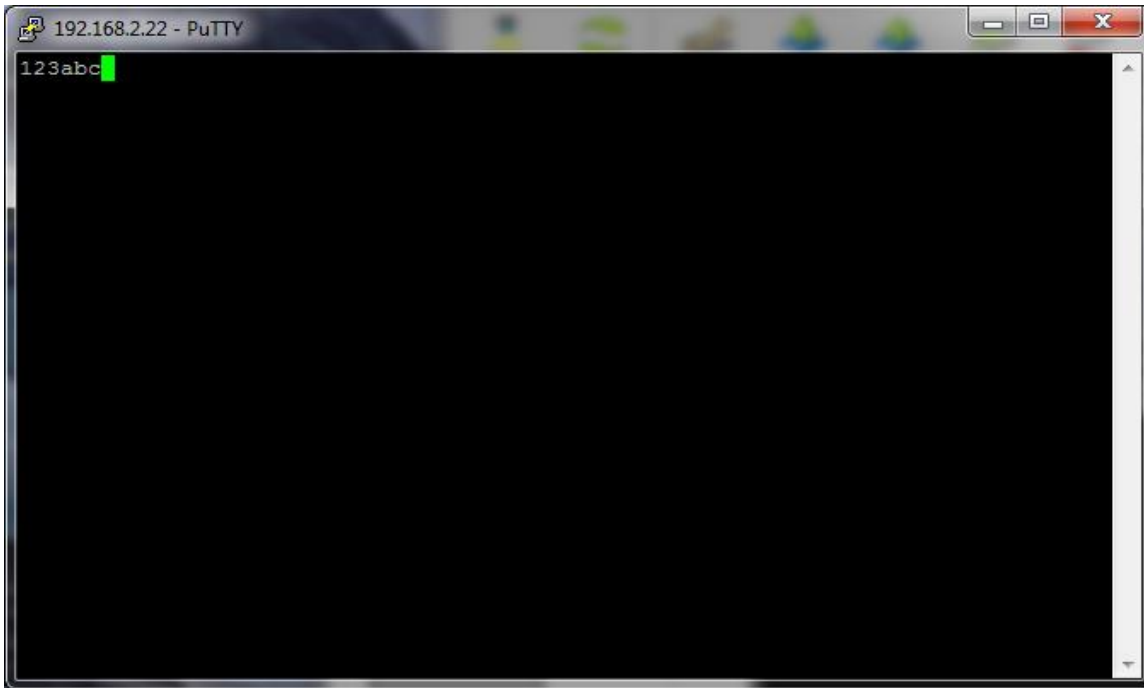
Enter abc  
No characters should be displayed as the return path is open.





Reattach the Loopback Plug.

Enter in abc and the characters should be displayed.



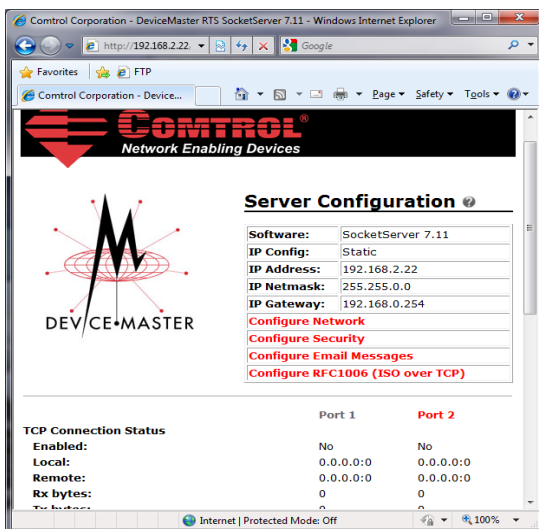
This concludes the local echo test.

Other telnet applications will have other configuration options.

It may also be necessary to configure the end point device to not echo characters.

By itself, the DeviceMaster is unable to echo.

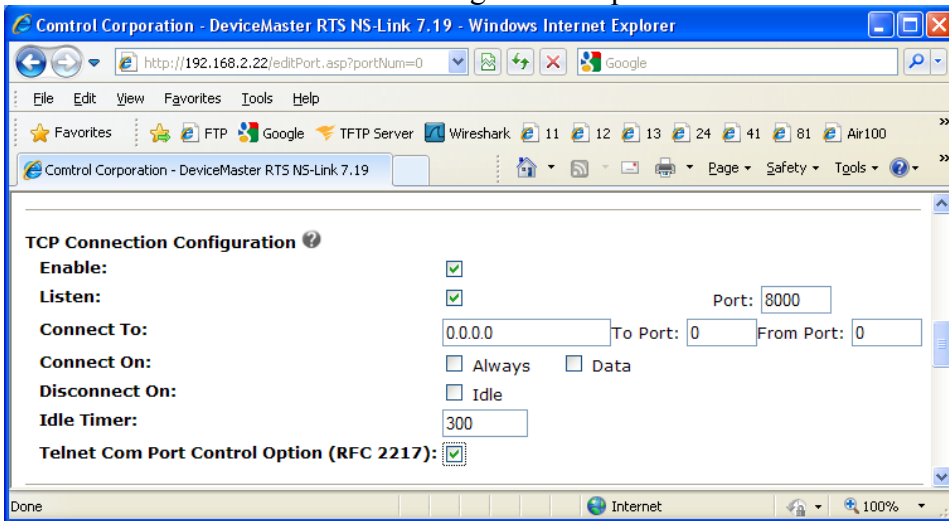
If after performing the above test procedure, echo is seen, or command options such as the arrow keys are not properly handled when connected to a device such as a console port, then it will be necessary to configure the RFC2217 option in the web pages of the DeviceMaster.



Re-open the web pages.

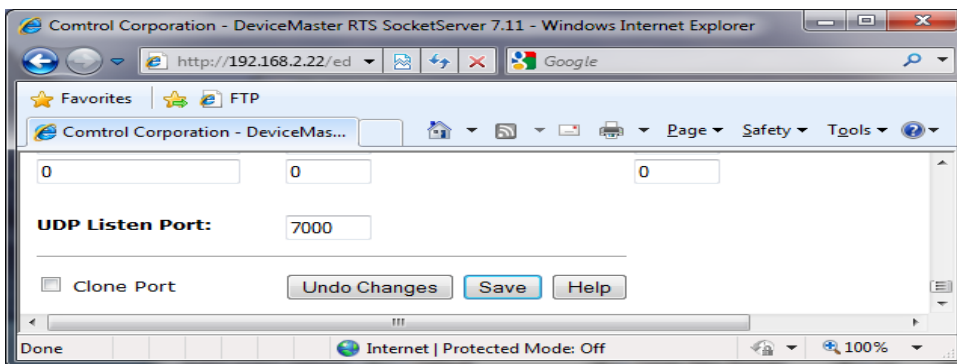
Click on the appropriate port (in this example port 1 is selected)

Scroll to the 'TCP Connection Configuration' options

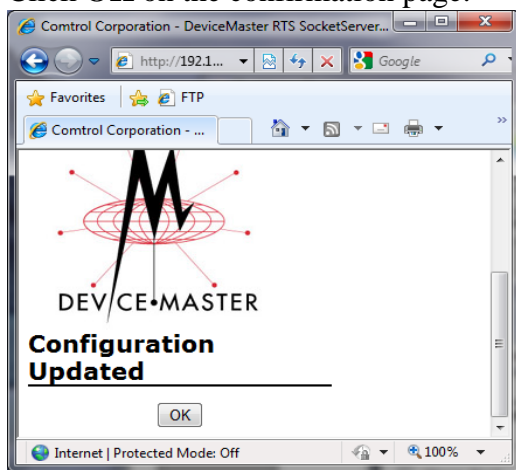


Select the option 'Telnet Com Port Control Option (RFC2217)'

Scroll to the bottom and click **Save**



Click **OK** on the confirmation page.



Retest for proper results.

Version 1.1

Added in RFC2217 option instructions for Console Ports that returned echo or did not accept proper command options.

Version 1.0

Created 4/12/10

Created by Mac Harned