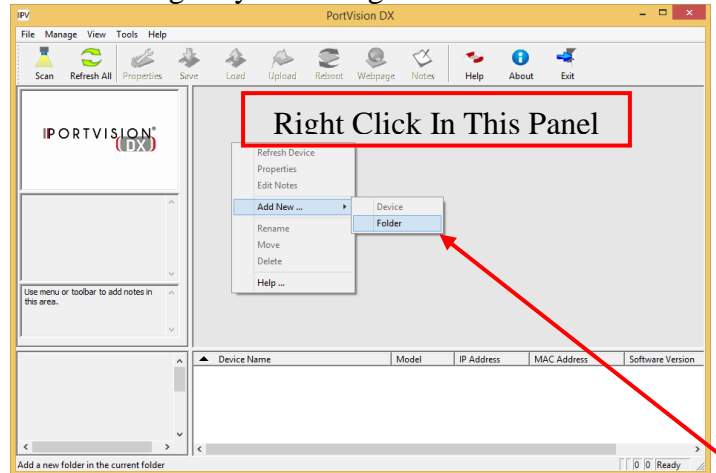


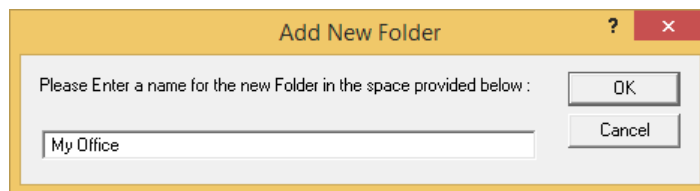
Add a Remote DeviceMaster to PortVision DX

This procedure requires that the DeviceMaster have an IP route from PortVision DX to the DeviceMaster itself. Run Ping, or Telnet, or open the DeviceMaster web page to confirm that the DeviceMaster is online and is accessible using TCP/IP.

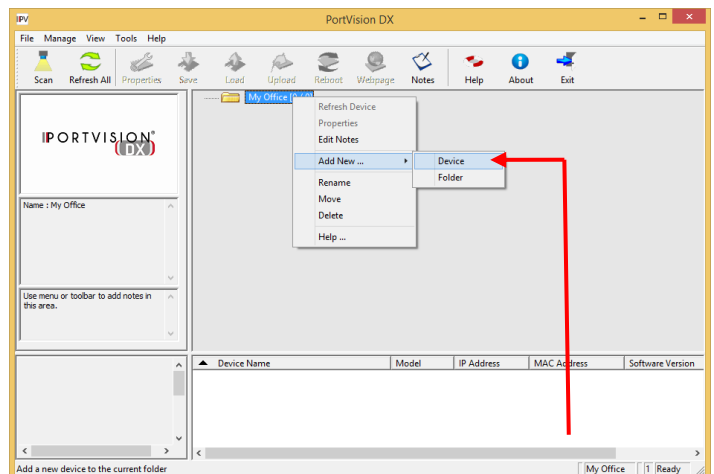
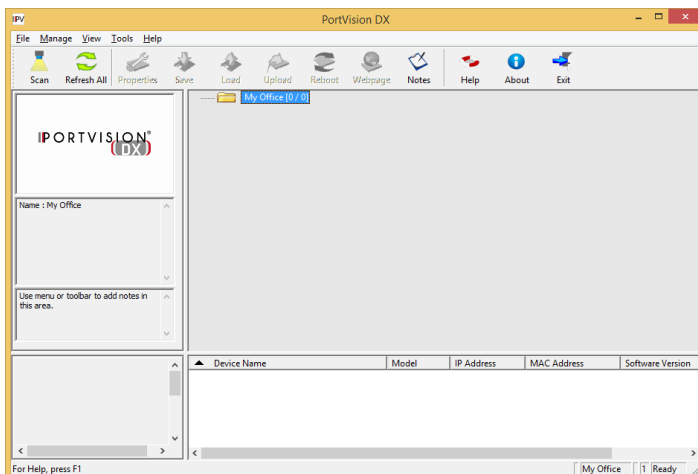
Begin by launching PortVision DX



After the Right Click select “Add New... Folder”

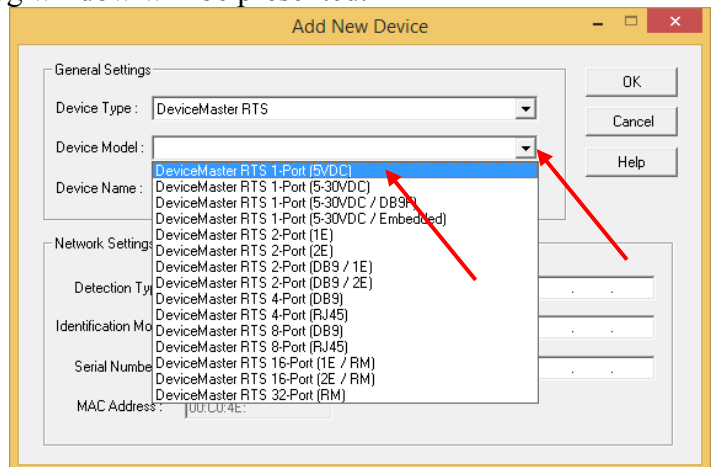
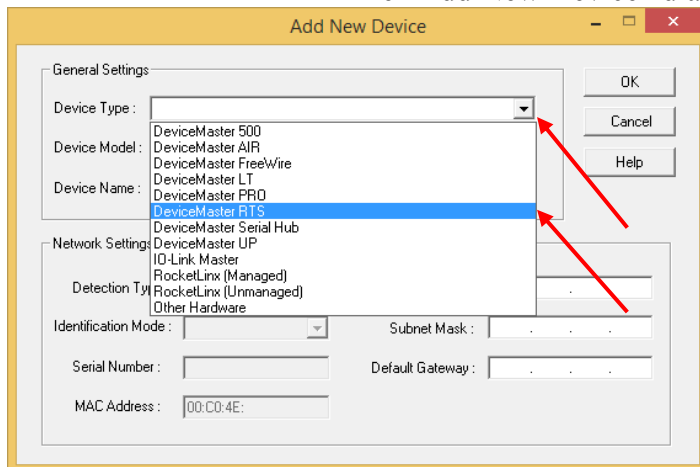


Enter a name for the Folder. Use something that may help define your setup. In this example I have used “My Office” as you can see above.



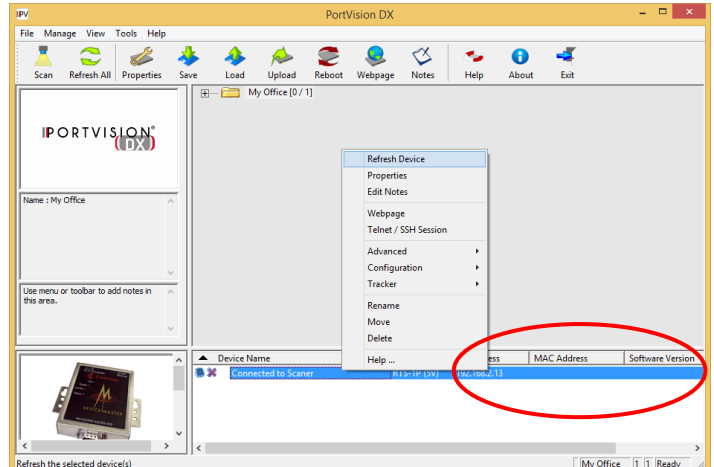
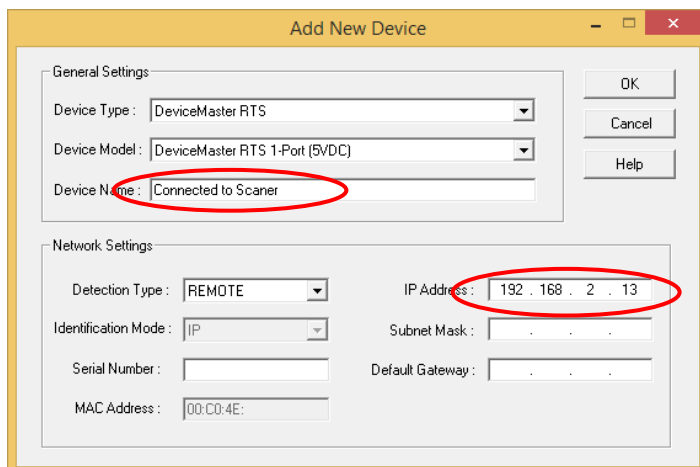
After the Folder has been created Right Click the Folder and select “Add New... Device”

The “Add New Device” dialog window will be presented.



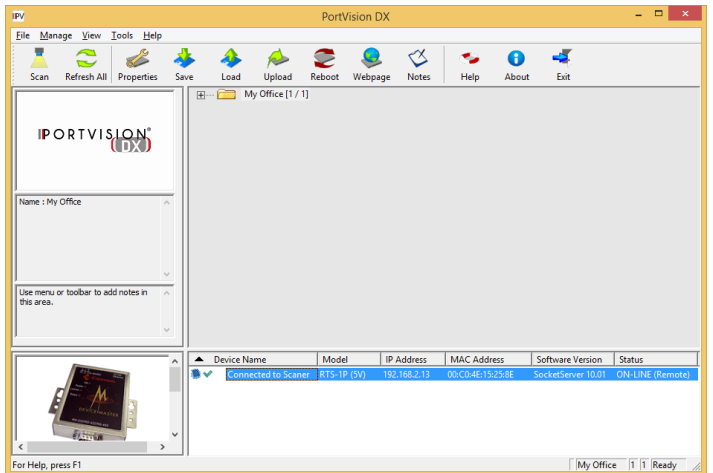
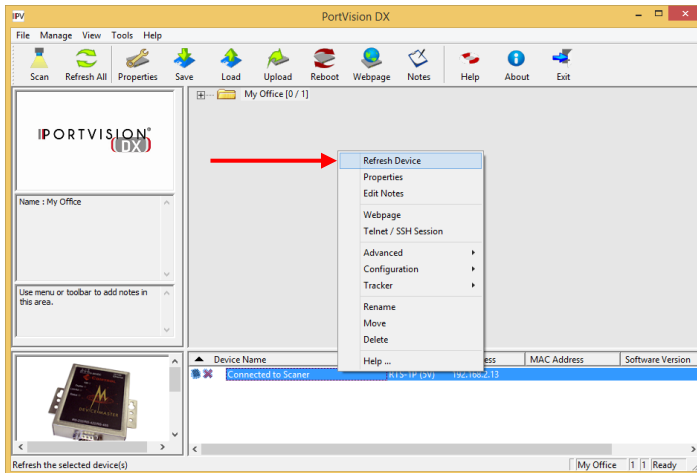
You will now need to define the device. In this example we are installing a 1 port DeviceMaster RTS 5VDC model. Click the drop down arrow on Device Type: and select the DeviceMaster RTS.

After selecting the “Device Type:” Click the drop down arrow on “Device Model:” and select the desired Model. Here we are installing the 1 port 5VDC model.



A Device Name will now be entered. Pick a name that is unique and is informative. I called this one “Connected to Scanner” so that I know my bar code scanner is on this DeviceMaster. The “Device Name” can be changed later if desired. Enter the IP address of the DeviceMaster (it is not necessary to enter the Subnet Mask or the Default Gateway) and click OK.

The result will likely show as something that looks like the graphic on the right. It may not show the MAC Address or the Software Version and may show as OFF-LINE. This is OK. It may also immediately show all of the correct information and this is also OK.



Right Click the DeviceMaster line item (highlighted in Blue) and select 'Refresh Device' from the pop-up menu.

PortVision DX should now go and query the DeviceMaster to determine its status. If it successfully communicates to the DeviceMaster the "Status" column should show as ON-LINE (Remote), the "Software Version" column should display the version of SocketServer or NS-Link installed in the DeviceMaster. The "MAC Address" should now be populated with the same MAC Address as seen on the DeviceMaster's Serial Number label affixed to the DeviceMaster itself. If none of the fields populate, then the DeviceMaster may not be attached to the network, powered on, may have a bad IP address or is planned for installation later.

Repeat for additional DeviceMaster's as required.